

CELL TOWER FOOTING CONSTRUCTION

In late April, construction began for a new cell tower in the commercial development located at E. 60th St. N. and I-29. The finished product will be a 100' monopole. This series of photos depict the work which is done to prepare the footing needed to support the cell tower.



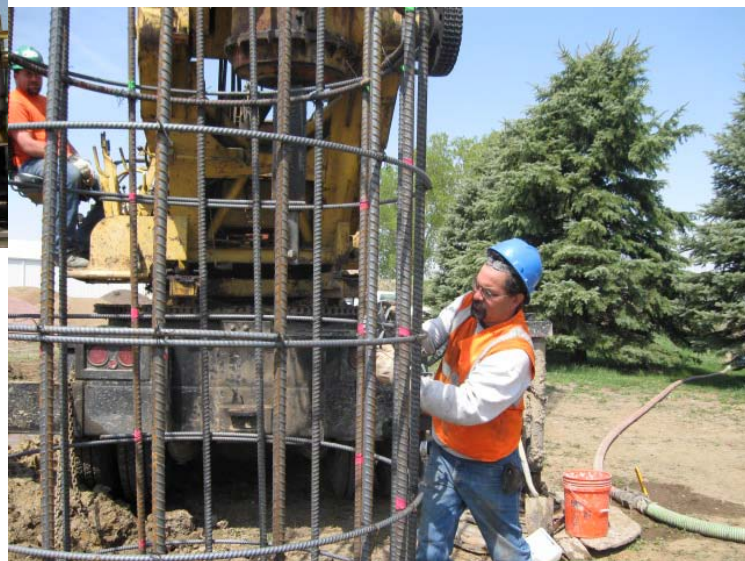
rebar frame for concrete



the selected site



placement of the rebar frame



CELL TOWER FOOTING CONTINUED



The rebar frame is inserted into the 40 foot deep hole and filled with water. Cement is then pumped into the hole, causing the water to rise and disperse out the top.



The final step is the placement of the tower anchor bolts.



the completed footing