

Envision 2035 Task Force

Participate. Bring Your Ideas. Imagine the Possibilities.

Minnehaha County Planning & Zoning

Ryan Streff

Envision 2035 Task Force Meeting Schedule

Meetings are held at 3:30pm in the County Commission Meeting Room



JANUARY

S	M	T	W	T	F	S
	1	2	3	4	5	6
7	8	9	10	11	12	13
14	15	16	17	18	19	20
21	22	23	24	25	26	27
28	29	30	31			



FEBRUARY

S	M	T	W	T	F	S
				1	2	3
4	5	6	7	8	9	10
11	12	13	14	15	16	17
18	19	20	21	22	23	24
25	26	27	28	29		



MARCH

S	M	T	W	T	F	S
					1	2
3	4	5	6	7	8	9
10	11	12	13	14	15	16
17	18	19	20	21	22	23
24	25	26	27	28	29	30
31						



APRIL

S	M	T	W	T	F	S
	1	2	3	4	5	6
7	8	9	10	11	12	13
14	15	16	17	18	19	20
21	22	23	24	25	26	27
28	29	30				



MAY

S	M	T	W	T	F	S
		1	2	3	4	5
6	7	8	9	10	11	12
13	14	15	16	17	18	19
20	21	22	23	24	25	26
27	28	29	30	31		



JUNE

S	M	T	W	T	F	S
						1
2	3	4	5	6	7	8
9	10	11	12	13	14	15
16	17	18	19	20	21	22
23	24	25	26	27	28	29
30						



JULY

S	M	T	W	T	F	S
	1	2	3	4	5	6
7	8	9	10	11	12	13
14	15	16	17	18	19	20
21	22	23	24	25	26	27
28	29	30	31			



AUGUST

S	M	T	W	T	F	S
				1	2	3
4	5	6	7	8	9	10
11	12	13	14	15	16	17
18	19	20	21	22	23	24
25	26	27	28	29	30	31



SEPTEMBER

S	M	T	W	T	F	S
						1
2	3	4	5	6	7	8
9	10	11	12	13	14	15
16	17	18	19	20	21	22
23	24	25	26	27	28	29
30						



OCTOBER

S	M	T	W	T	F	S
	1	2	3	4	5	6
7	8	9	10	11	12	13
14	15	16	17	18	19	20
21	22	23	24	25	26	27
28	29	30	31			



NOVEMBER

S	M	T	W	T	F	S
				1	2	3
4	5	6	7	8	9	10
11	12	13	14	15	16	17
18	19	20	21	22	23	24
25	26	27	28	29	30	



DECEMBER

S	M	T	W	T	F	S
						1
2	3	4	5	6	7	8
9	10	11	12	13	14	15
16	17	18	19	20	21	22
23	24	25	26	27	28	29
30	31					

Minnehaha County Planning Department → Moving Forward ~ Planning Ahead

rstreff@minnehahacounty.org

605-367-4204

envision2035.minnehahacounty.org

Agenda – March 1, 2012

- 1) Discuss Community Open House
 - (Date, Time & Locations)
- 2) What chapters to include in the plan
- 3) Review Future Land Use Maps
- 4) Building Eligibility Information
- 5) Public Comments
- 6) Next Meeting Details



1) Public meetings (Date, Time & Locations)

- a. Large areas for public meeting (i.e. schools, fire halls)
- b. How many locations (based on population or area?)
- c. Evening meetings (i.e. 7:00PM)

**Community Open House
Discussion**

- Demographics
- Existing Land Use
- Land Use & Growth management
- Transportation
- Public Facilities and Services
- Natural Resources
- Environmental Management
- Parks & Trails
- Water Supply Plan
- Economic Development
- Utilities
- Community Background
- Public Participation
- Energy Conservation
- County Corridors
- Introduction
- Sustainability
- Agricultural Preservation
- Rural & Open Space Protection
- Historic Preservation
- Transition Areas
- Sense of Community
- Mobility & Connectivity
- Quality Educational Opportunities
- Economic Sustainability
- Environmental Stewardship
- Health, Happy Residents
- Housing
- Cultural, Historic & Recreational Resources
- Community Facilities, Utilities, & Energy

Chapter Examples



Land Use MAP

MINNEHAHA COUNTY
FUTURE
LAND USE
MAP

Scott A

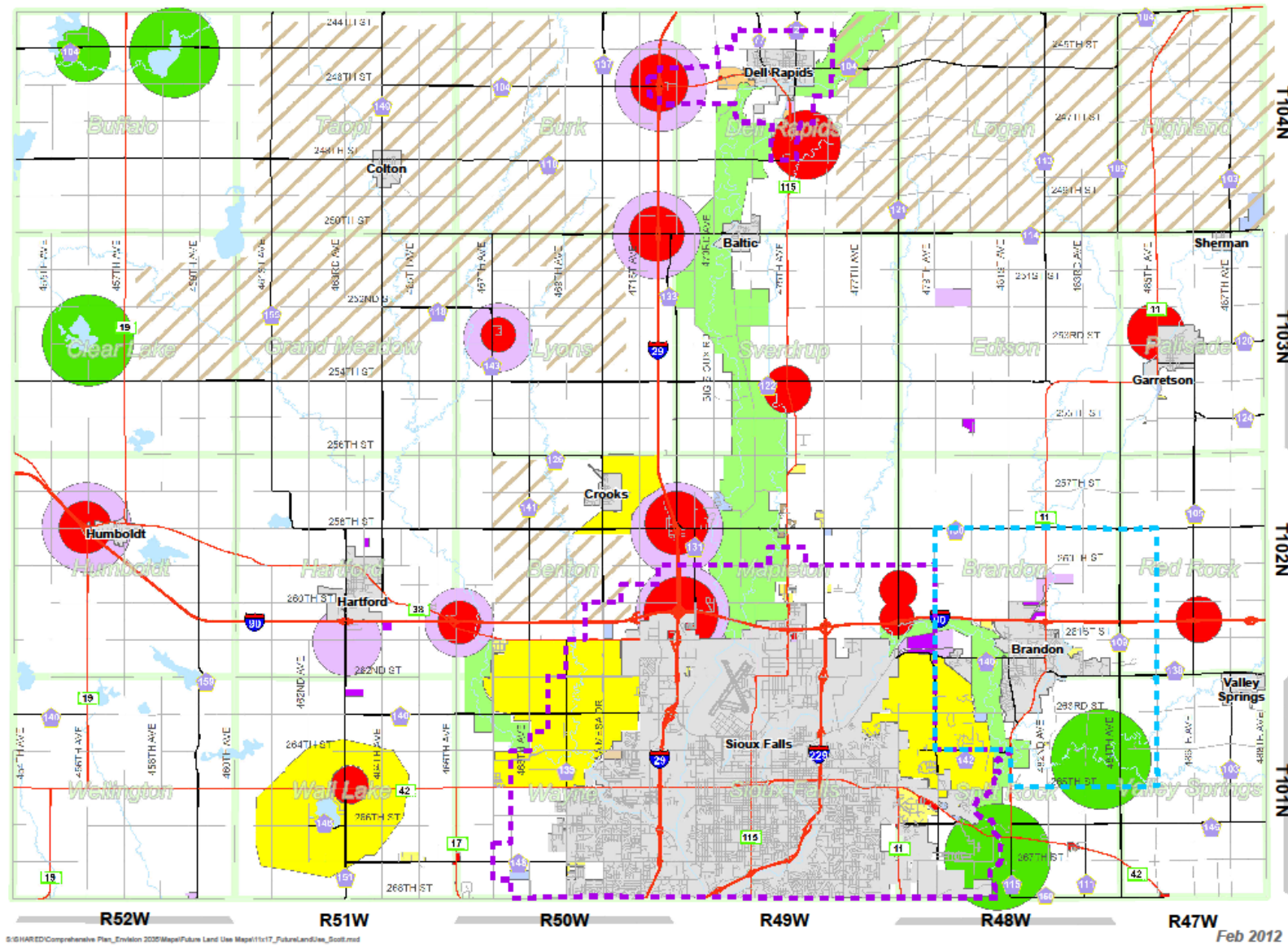


- Joint Planning
- Joint Platting
- RR
- C
- I1
- RC
- AG



1 inch = 2.5 miles

Disclaimer:
The Data is provided "as is" without warranty or any representation of accuracy, timeliness or completeness. The burden for determining accuracy, completeness, timeliness, marketability and fitness for or the appropriateness for use rests solely on the user. Minnehaha County makes no warranties express or implied, as to the use of the Data. There are no implied warranties of merchantability or fitness for a particular purpose. The user acknowledges and accepts the limitations of the Data, including the fact that the Data is dynamic and is in a constant state of maintenance, correction and update.



S:\SHARED\Comprehensive Plan_Envision 2035\Map\Future Land Use Map\1717_FutureLandUse_Scott.mxd

Feb 2012

Land Use Map (Scott)

MINNEHAHA COUNTY
FUTURE
LAND USE
MAP

Pat H

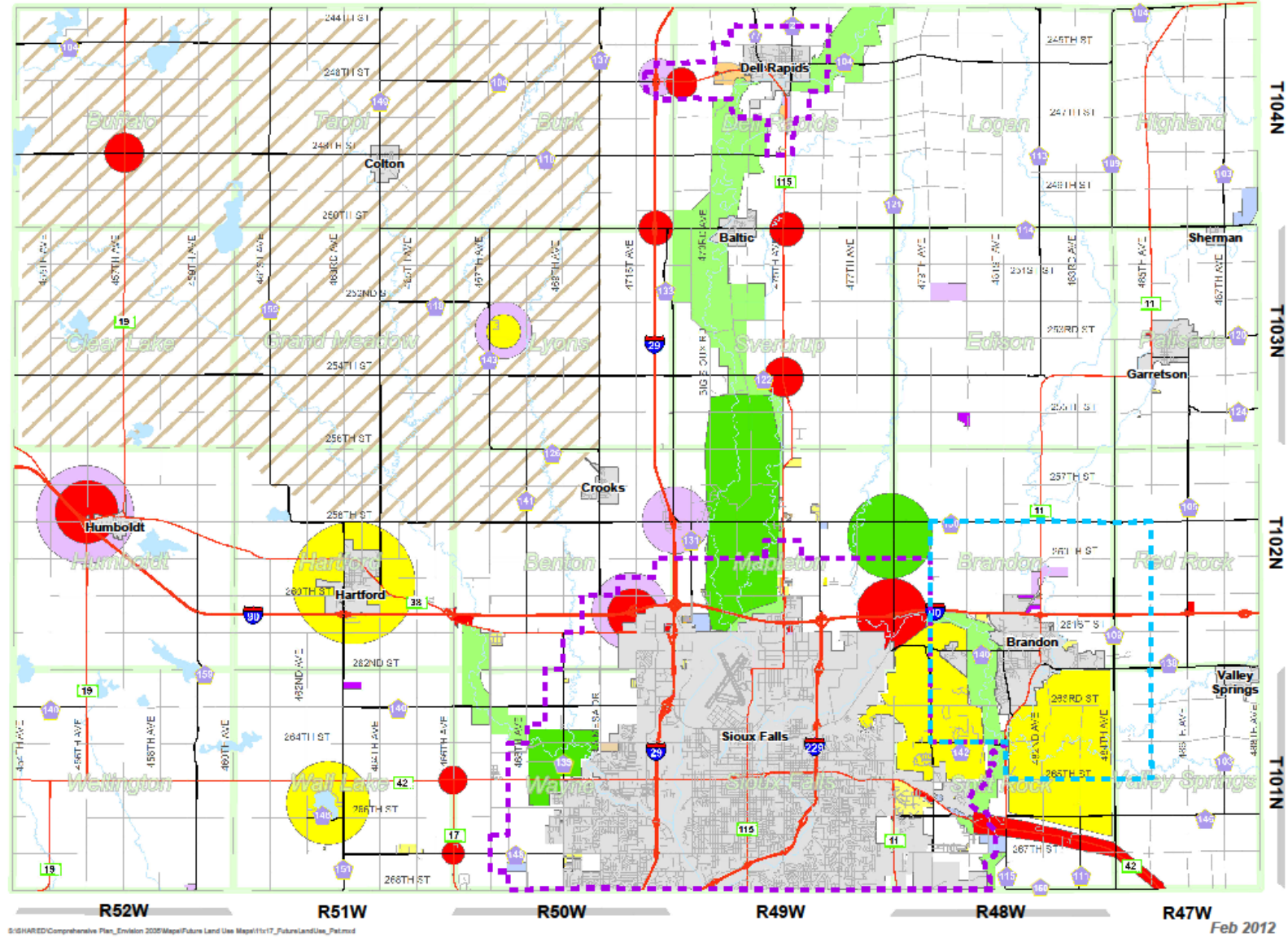


- Joint Planning
- Joint Platting
- RR
- C
- I1
- RC
- AG



1 inch = 2.5 miles

Disclaimer:
The Data is provided "as is" without warranty or any representation of accuracy, timeliness or completeness. The burden for determining accuracy, completeness, timeliness, merchantability and fitness for or the appropriateness for use rests solely on the requester. Minnehaha County makes no warranties express or implied, as to the use of the Data. There are no implied warranties of merchantability or fitness for a particular purpose. The requester acknowledges and accepts the limitations of the Data, including the fact that the Data is dynamic and is in a constant state of maintenance, correction and update.



©SIGHARD Comprehensive Plan, Edition 2007/Map/Future Land Use Map/11x17_FutureLandUse_Pat.mxd

Feb 2012

Land Use Map (Pat)

MINNEHAHA COUNTY FUTURE LAND USE MAP

Ryan S

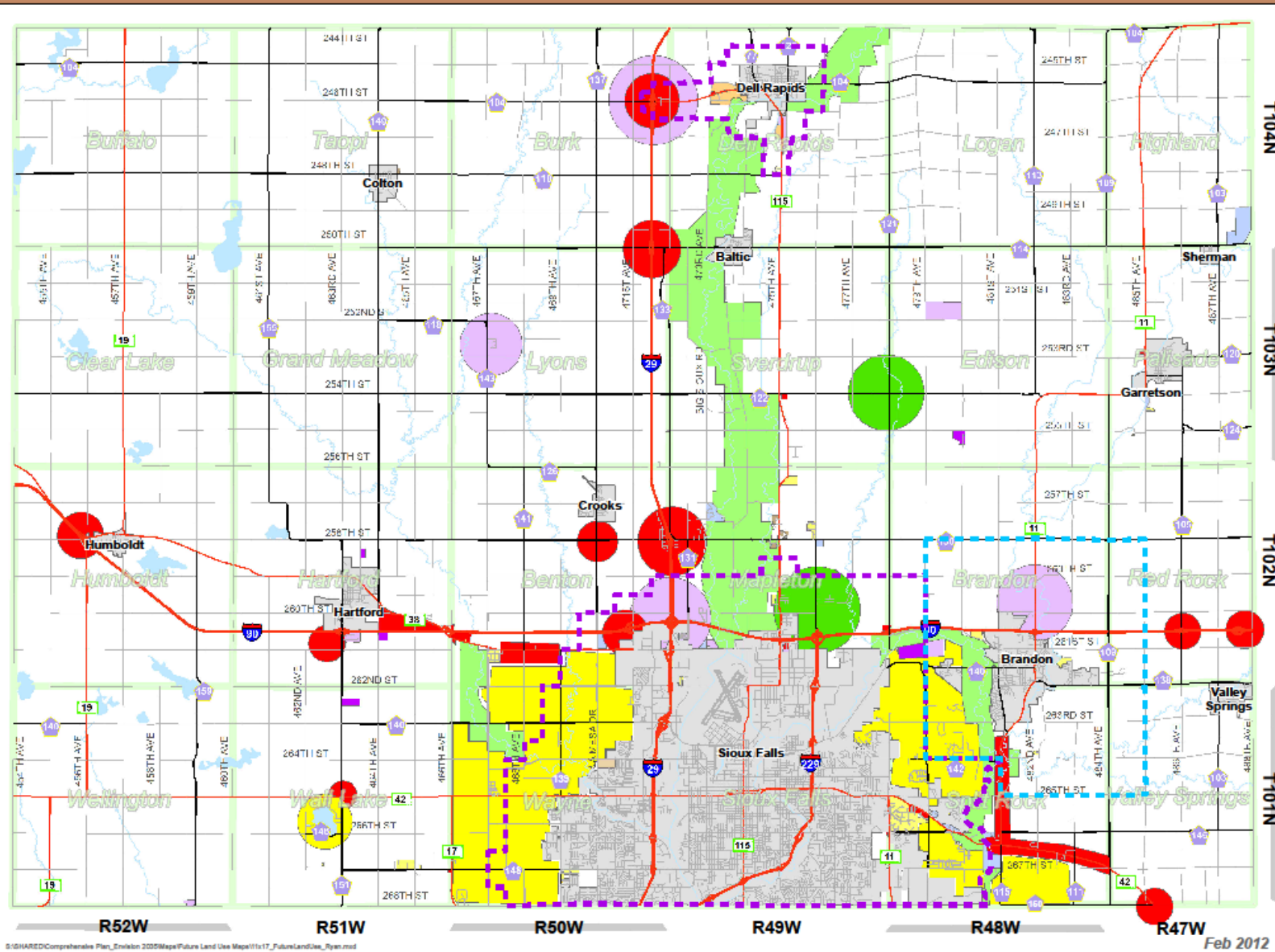


- Joint Planning
- Joint Platting
- RR
- C
- I1
- RC
- AG



1 inch = 2.5 miles

Disclaimer:
The Data is provided "as is" without warranty or any representation of accuracy, timeliness or completeness. The burden for determining accuracy, completeness, timeliness, merchantability and fitness for or the appropriateness for use rests solely on the user. Minnehaha County makes no warranties express or implied, as to the use of the Data. There are no implied warranties of merchantability or fitness for a particular purpose. The user acknowledges and accepts the limitations of the Data, including the fact that the Data is dynamic and is in a constant state of maintenance, correction and update.



S:\SHARED\Comprehensive Plan_Envision 2025\Maps\Future Land Use Map\rls17_FutureLandUse_Ryan.mxd

Feb 2012

Land Use Map (Ryan)

MINNEHAHA COUNTY
FUTURE
LAND USE
MAP

Dustin P

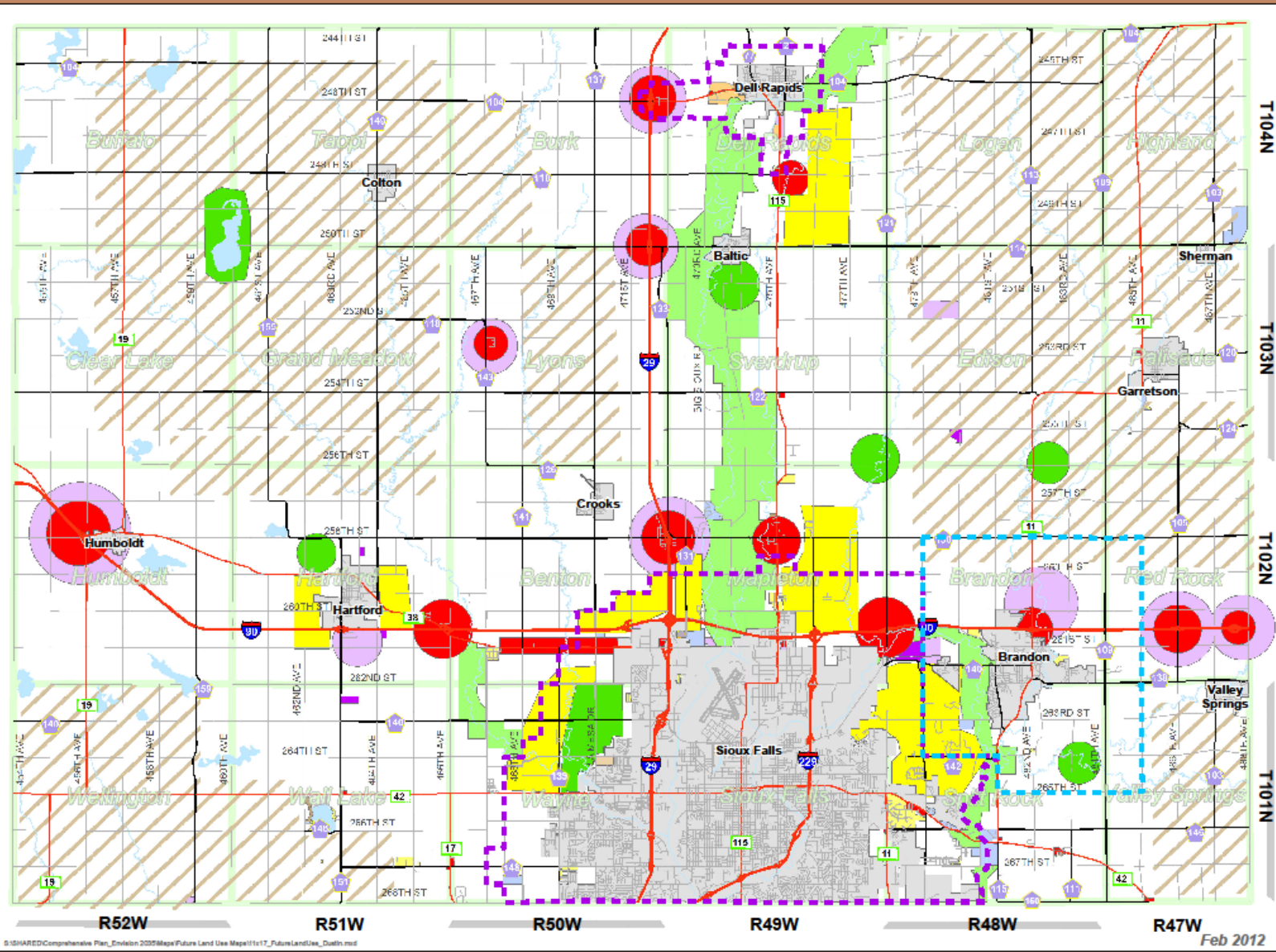


- Joint Planning
- Joint Platting
- RR
- C
- I1
- RC
- AG



1 inch = 2.5 miles

Disclaimer:
The Data is provided "as is" without warranty or any representation of accuracy, timeliness or completeness. The burden for determining accuracy, completeness, timeliness, merchantability and fitness for or the appropriateness for use rests solely on the user. Minnehaha County makes no warranties express or implied, as to the use of the Data. There are no implied warranties of merchantability or fitness for a particular purpose. The user acknowledges and accepts the limitations of the Data, including the fact that the Data is dynamic and is in a constant state of maintenance, correction and update.



S:\SHARED\Comprehensive Plan_Envision 2035\Map\Future Land Use Maps\17_Future Land Use_Dustin.mxd

Feb 2012

Land Use Map (Dustin)

**MINNEHAHA COUNTY
FUTURE
LAND USE
MAP
Common**



Joint Planning
Joint Platting

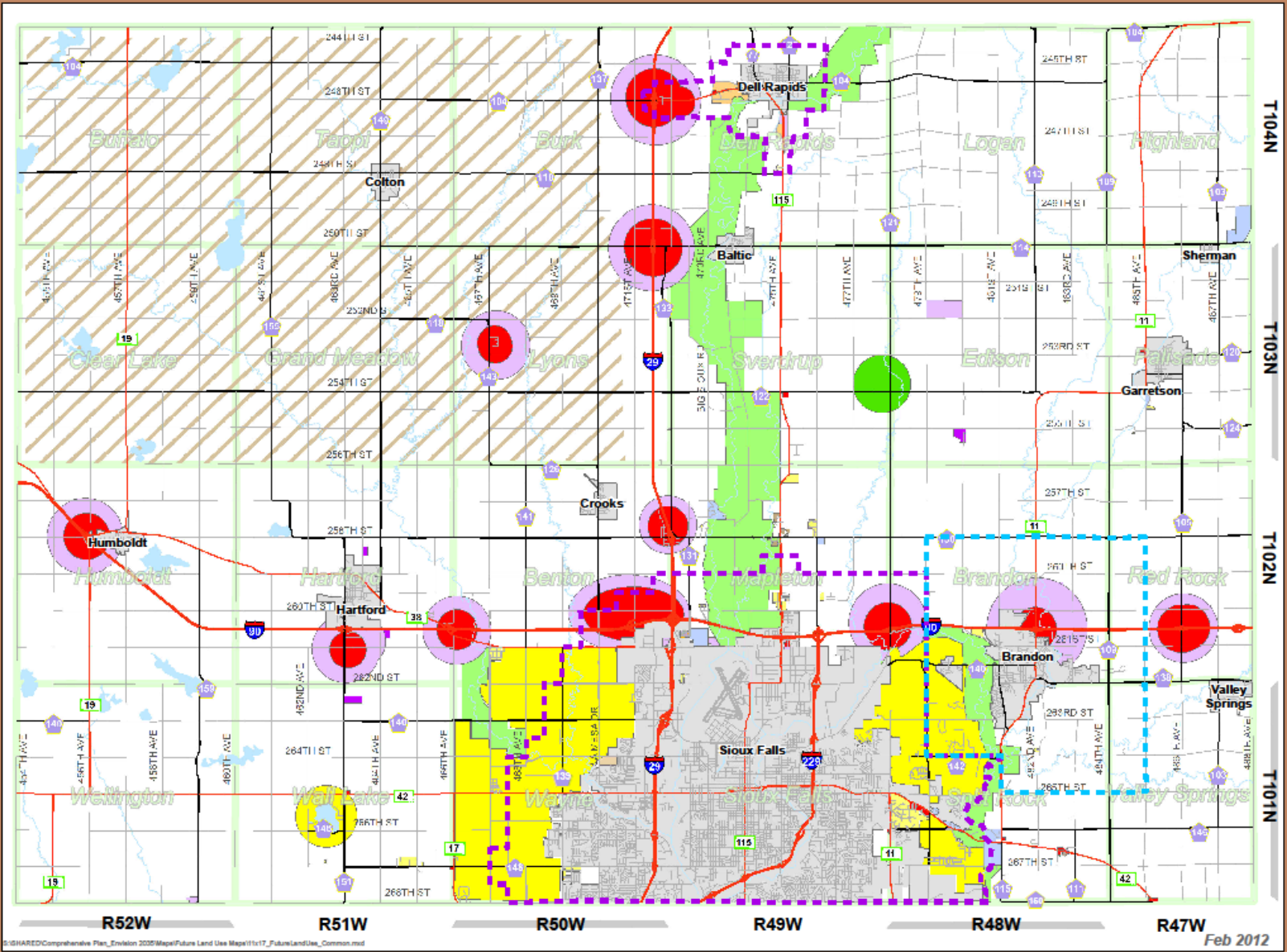
ZONE_

- RR
- C
- I1
- RC
- AG



1 inch = 2.5 miles

Disclaimer:
The Data is provided "as is" without warranty or any representation of accuracy, timeliness or completeness. The burden for determining accuracy, completeness, timeliness, merchantability and fitness for or the appropriateness for use rests solely on the user. Minnehaha County makes no warranties express or implied, as to the use of the Data. There are no implied warranties of merchantability or fitness for a particular purpose. The user acknowledges and accepts the limitations of the Data, including the fact that the Data is dynamic and is in a constant state of maintenance, correction and update.



ES:SHARED\Comprehensive Plan_Environ 2005\Map\Future Land Use Map\11v17_FutureLandUse_Common.mxd

Feb 2012

Land Use Map (Common)

MINNEHAHA COUNTY FUTURE LAND USE MAP

ALL



- Joint Planning
- Joint Platting

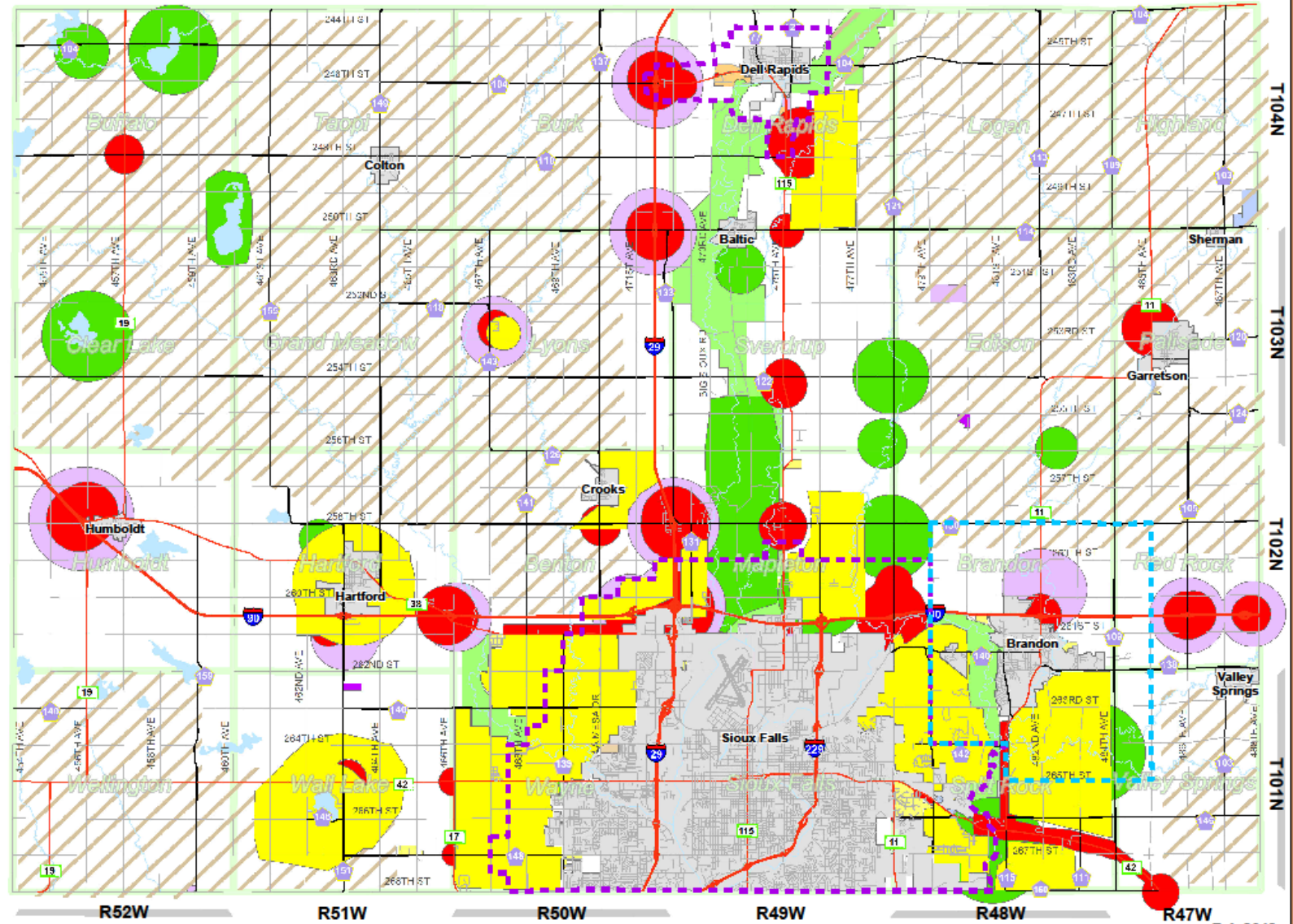
ZONE_

- RR
- C
- I1
- RC
- AG



1 inch = 2.5 miles

Disclaimer:
The Data is provided "as is" without warranty or any representation of accuracy, timeliness or completeness. The burden for determining accuracy, completeness, timeliness, merchantability and fitness for or the appropriateness for use rests solely on the requester. Minnehaha County makes no warranties express or implied, as to the use of the Data. There are no implied warranties of merchantability or fitness for a particular purpose. The requester acknowledges and accepts the limitations of the Data, including the fact that the Data is dynamic and is in a constant state of maintenance, correction and update.



©SHAREDComprehensive Plan_Envision 2025MapofFuture Land Use Maps\117_FutureLandUse_All.mxd

Feb 2012

Land Use Map (All)

MINNEHAHA COUNTY
FUTURE
LAND USE
MAP

Municipalities

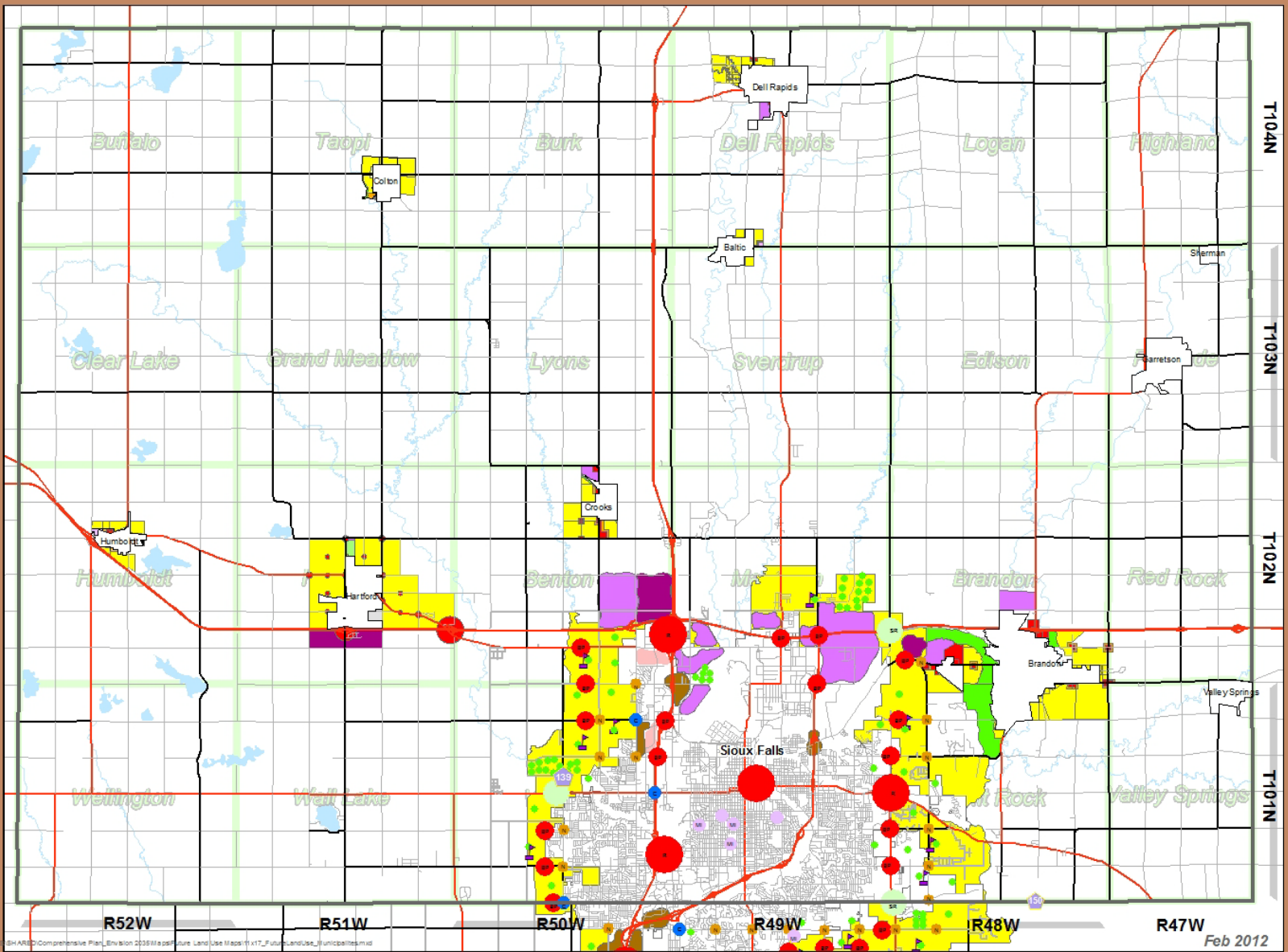


- Residential
- Multi Family
- Commercial
- Heavy Industrial
- Light Industrial
- Parks & Recreation
- Municipalities



1 inch = 2.5 miles

Disclaimer:
The Data is provided "as is" without warranty, or any representation of accuracy, timeliness or completeness. The burden for determining accuracy, completeness, timeliness, merchantability and fitness for or the appropriateness for use rests solely on the requester. Minnehaha County makes no warranties express or implied, as to the use of the Data. There are no implied warranties of merchantability or fitness for a particular purpose. The requester acknowledges and accepts the limitations of the Data, including the fact that the Data is dynamic and is in a constant state of maintenance, correction and update.



SHARED/Comprehensive Plan_Evision 2035/Map/figure Land Use Map/1117_FutureLandUse_Municipalities.mxd

R47W Feb 2012

Municipalities Future Land Use

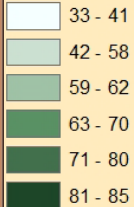
Minnehaha County Available Building Eligibilities Per Township



Total Eligibility: Township



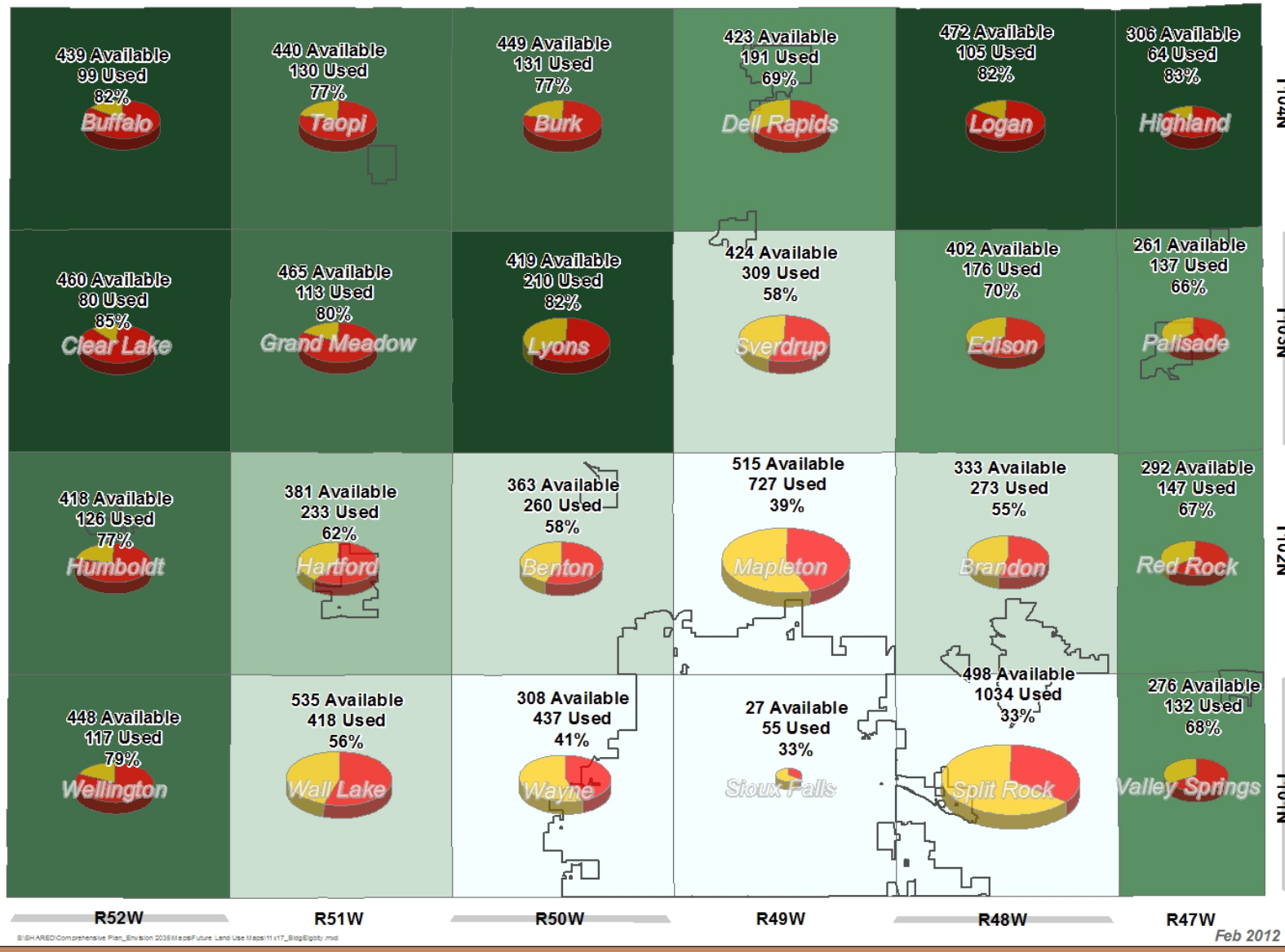
% Total Available for Building



1 inch = 2.5 miles



Disclaimer:
The Data is provided "as is" without warranty or any representation of accuracy, timeliness or completeness. The purpose for determining accuracy, completeness, timeliness, materiality and fitness for or the appropriate use for use rests solely on the requester. Minnehaha County makes no warranties express or implied, as to the use of the Data. There are no implied warranties of merchantability or fitness for a particular purpose. The requester acknowledges and accepts the limitations of the Data, including the fact that the Data is dynamic and is in a constant state of maintenance, correction and update.



B:\SHARED\Comprehensive Plan_Envision 2036\Map\Future Land Use Maps\1117_BldgEligibly.mxd

Feb 2012

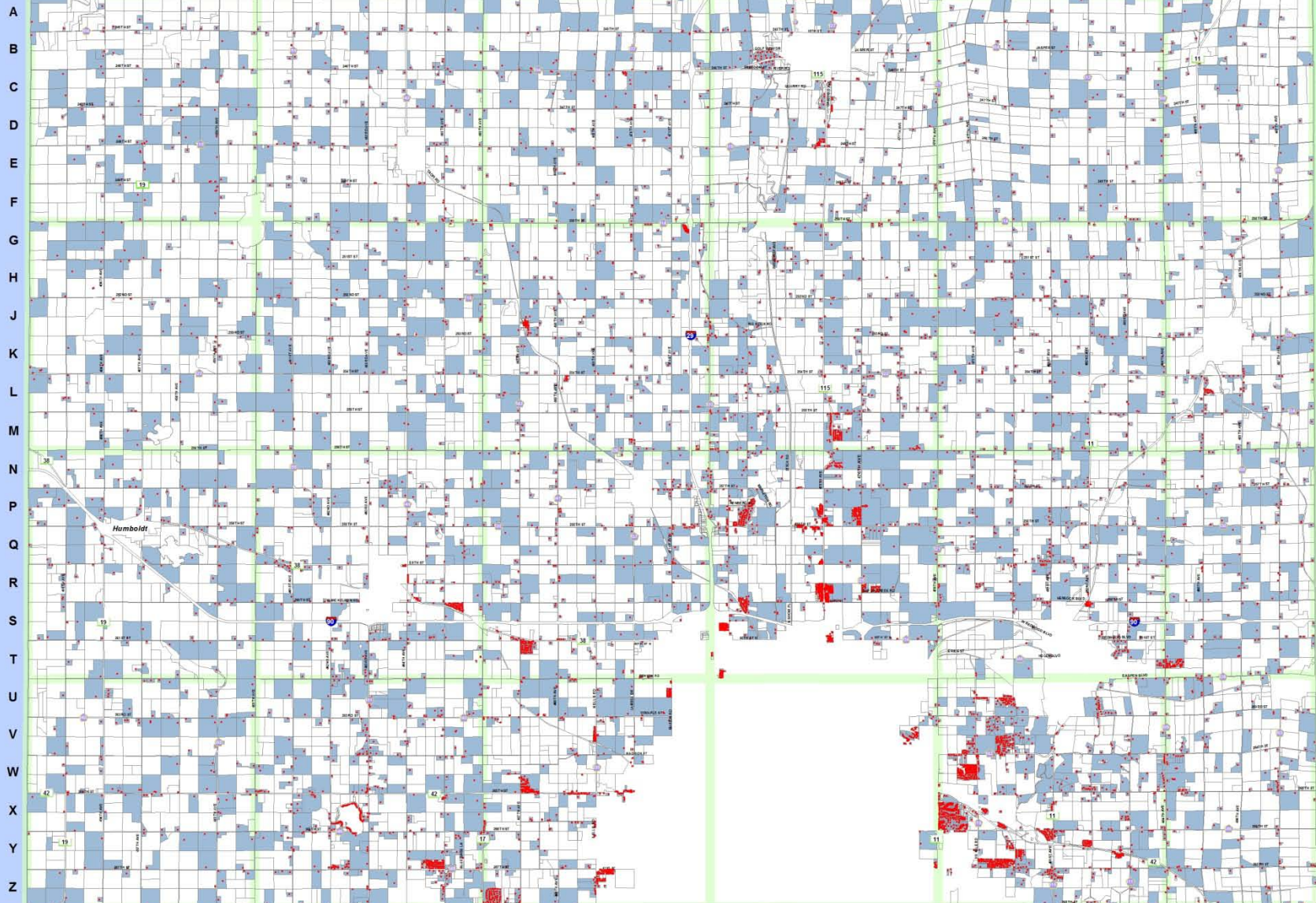
Building Eligibility Info

Lake County

Moody County

Pipestone County, MN

1 2 3 4 5 6 7 8 9 10 11 12 13 14 15 16 17 18 19 20 21 22 23 24 25 26 27 28 29 30 31 32 33 34



MINNEHAHA COUNTY

T104N

T103N

T102N

T101N



Rock County, MN

R52W

R51W

R48W

R47W

Turner County

Lyon County, IA

# of Acres w/ Single Family Homes:	125,359 ac
# of Acres in Minnehaha County (excluding municipalities):	453,892 ac

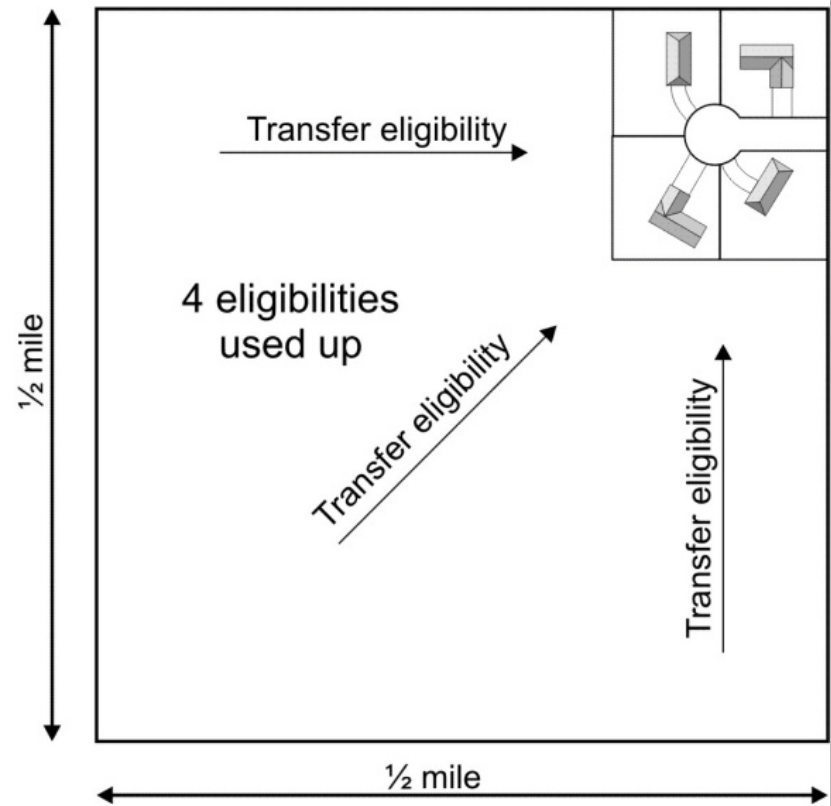
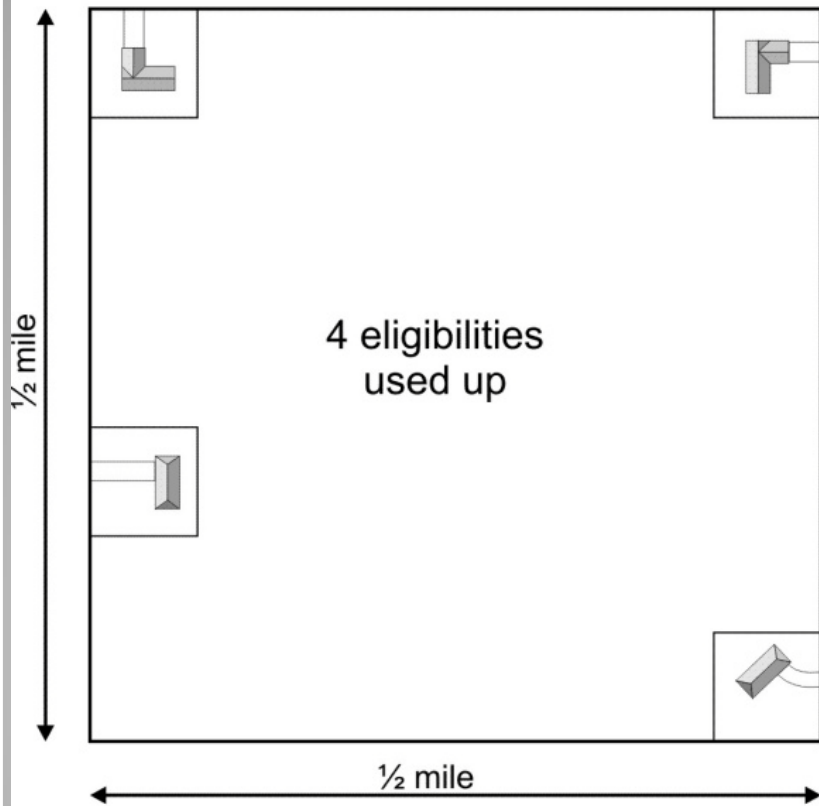


Map Date: 12/17/12

Building Eligibility Info

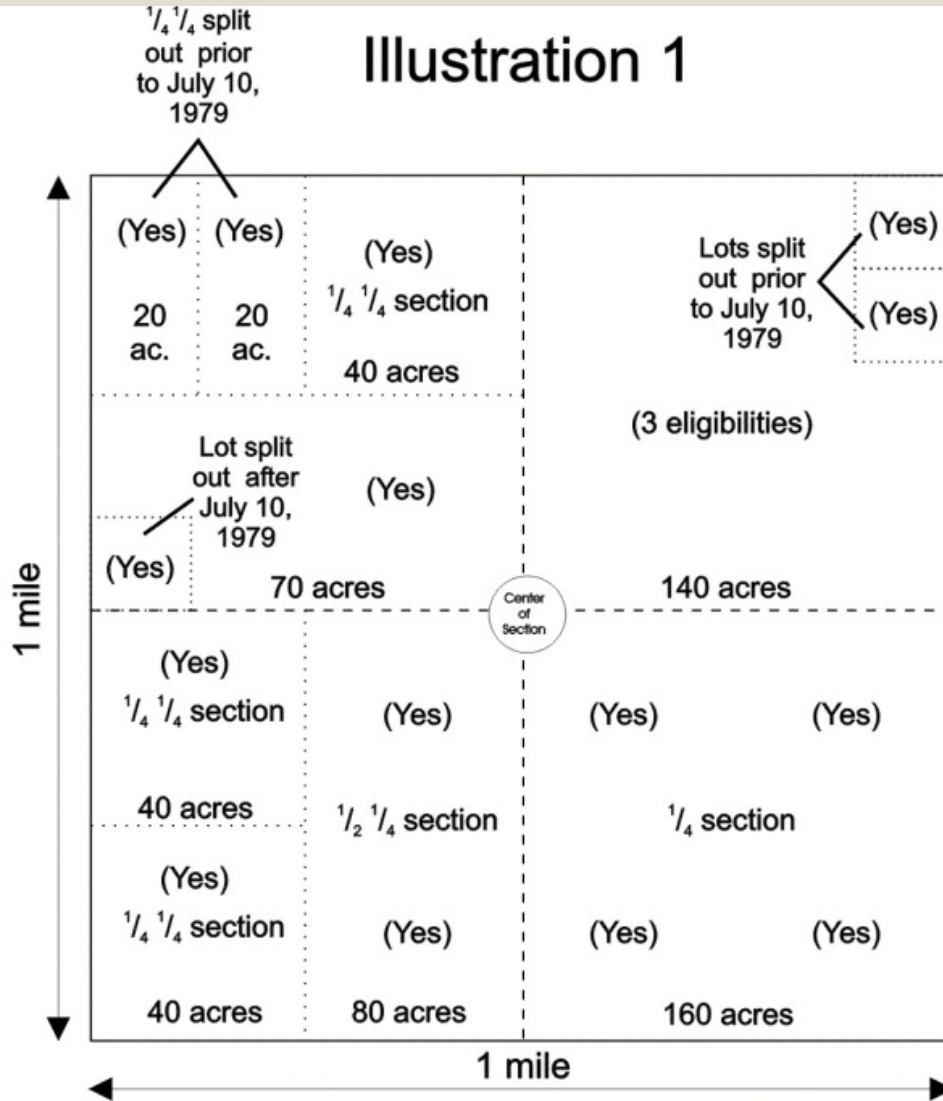
- Density Zoning
- Adopted September 27, 1988
 - 1 per quarter-quarter rule
 - Exceptions to the rule
 - Right-to-Farm Notice Covenant
 - Transfer of building eligibility
 - contiguous
 - under the same ownership
 - uniformly described on the deed
 - Right-to-Farm Notice Covenant

Building Eligibility Info

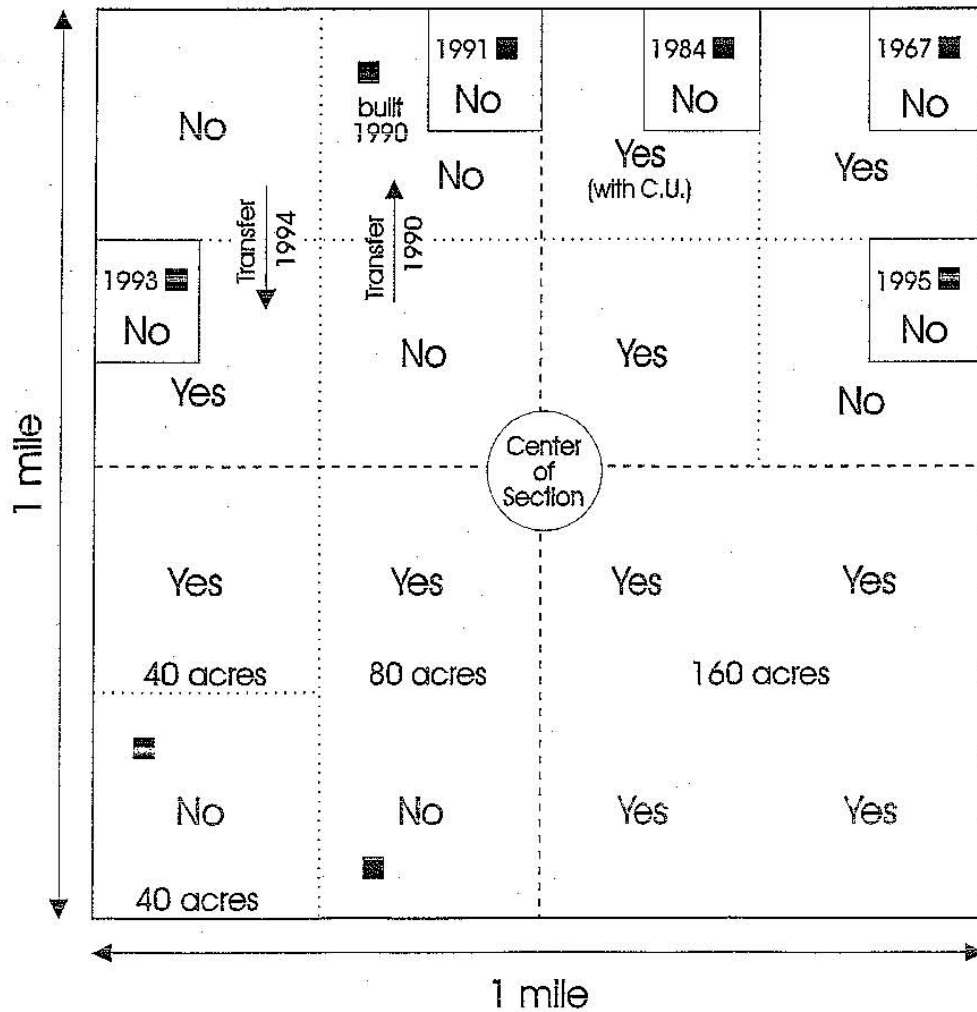


Building Eligibility Info

Illustration 1



Building Eligibility Into



C = Conditional Uses
 L = Lock (in use)
 A = Available
 F = Flip a Coin

- - existing house
- No - no building eligibility
- Yes - building eligibility
- C.U. - Conditional use permit

July 10, 1979

September 27, 1988

Building Eligibility Info

- Maintain the status quo – no changes
- Increase # allowed
- Zoning – Intense Ag Area
 - Lose eligibilities in that area?
- Change transfer options
 - Within a section
 - Anywhere in the county
 - Minimum number required to move
 - How would it be administered

Building Eligibility Info

Other Questions or Comments?

envision2035.minnehahacounty.org

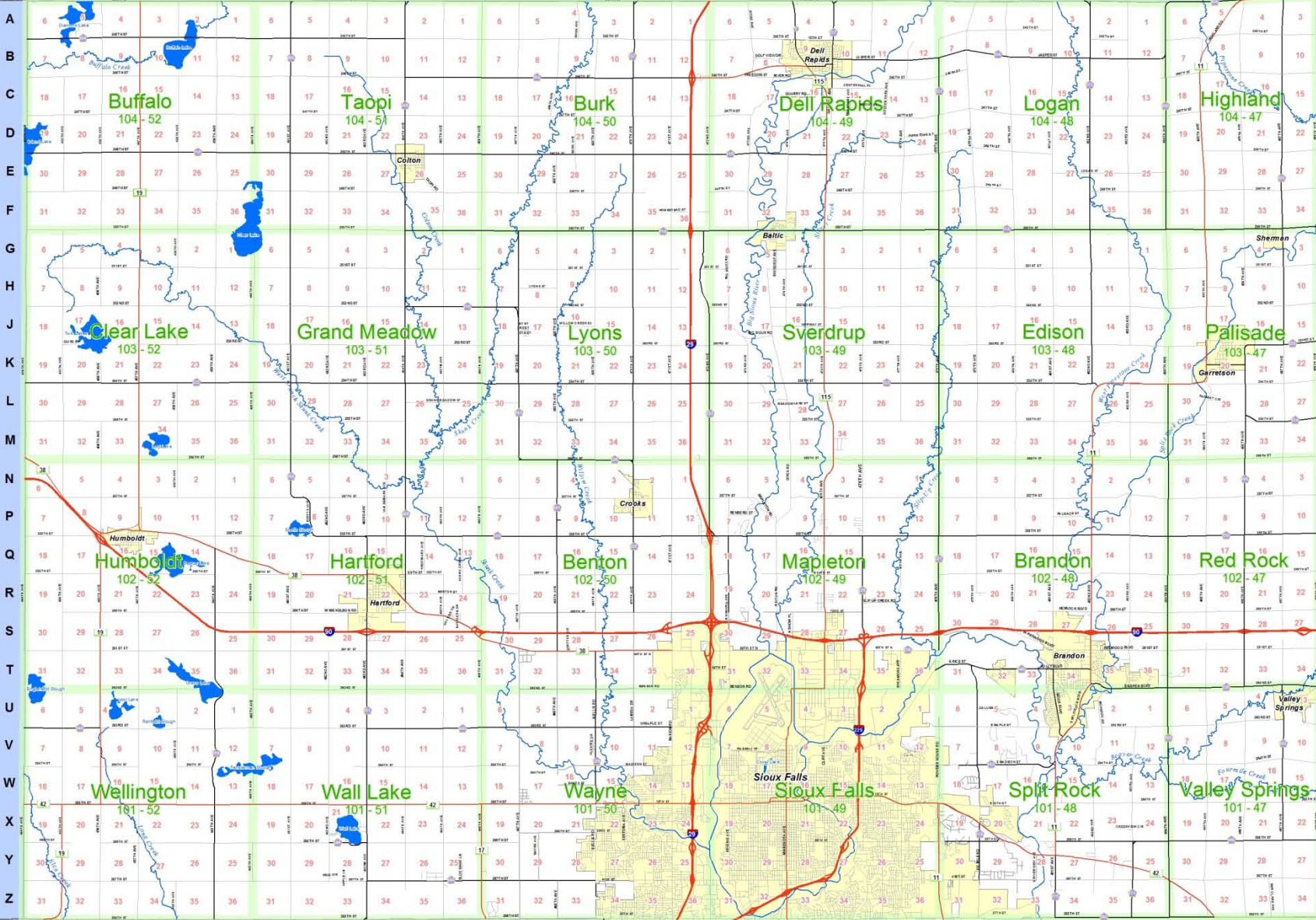
Next Meeting?

Lake County

Moody County

Pipestone County, MN

1 2 3 4 5 6 7 8 9 10 11 12 13 14 15 16 17 18 19 20 21 22 23 24 25 26 27 28 29 30 31 32 33 34



MINNEHAHA COUNTY

T104N

T103N

T102N

T101N

Rock County, MN

MacCook County

Disclaimer:
 The Data is provided "as is" without warranty of any
 representation of accuracy, timeliness or completeness.
 The user assumes all responsibility for determining the
 appropriateness for use with a GIS on the local level.
 Minnesota County names are used where appropriate to
 identify the boundaries of the Data, including the fact that the
 Data is georeferenced to a geographic coordinate system.
 Identification and updates. If errors are found, please contact the
 Planning and Zoning Department of Minnehaha County.

R52W

R51W

R50W

R49W

R48W

R47W

Turner County

Lincoln County

Lyon County, IA

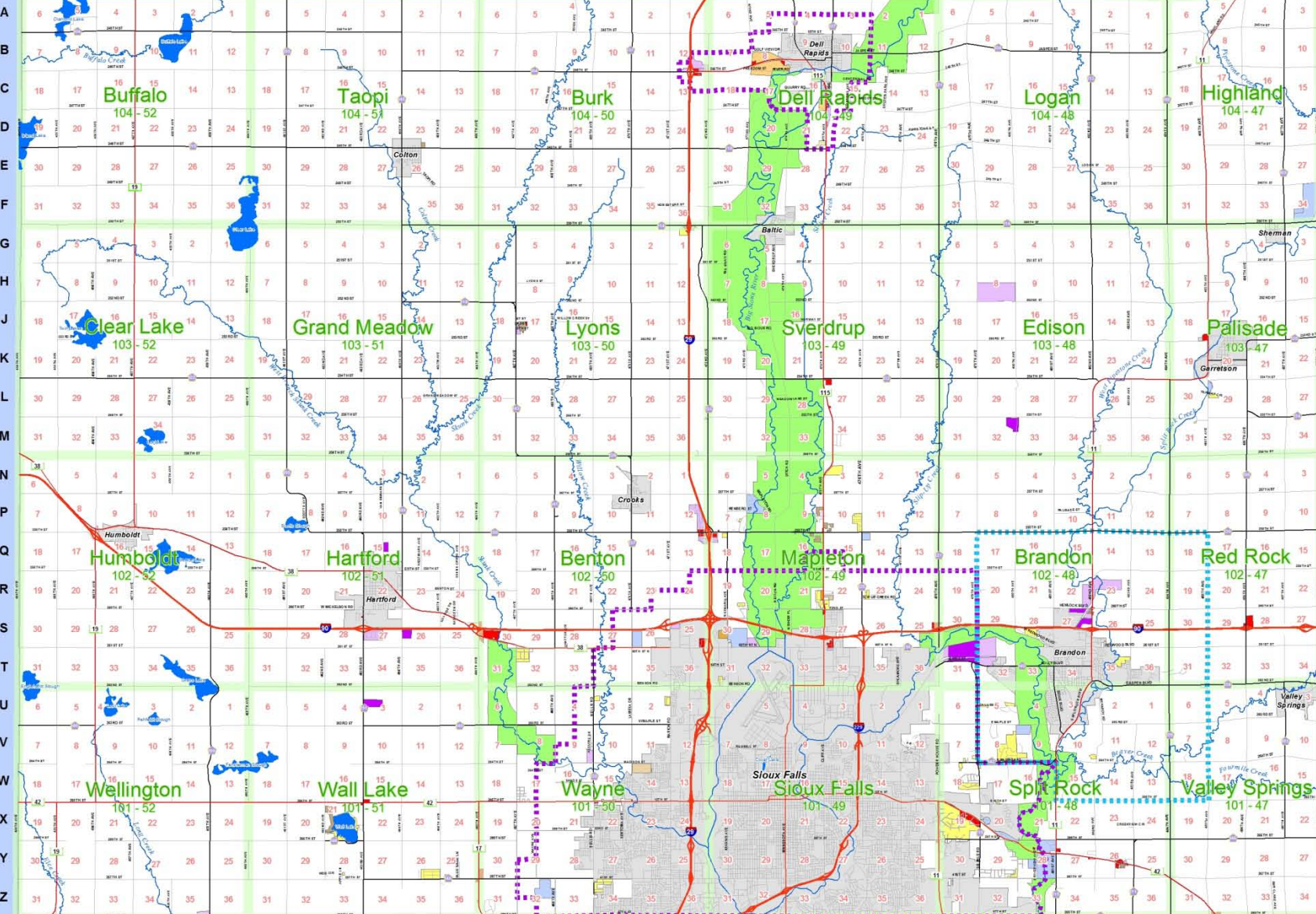


Lake County

Moody County

Pipestone County, MN

1 2 3 4 5 6 7 8 9 10 11 12 13 14 15 16 17 18 19 20 21 22 23 24 25 26 27 28 29 30 31 32 33 34



MINNEHAHA COUNTY
T104N
T103N

T102N
Rock County, MN
T101N



Disclaimer: The State is not responsible for any misapplication of accuracy, timeliness or completeness. The user is responsible for obtaining additional information. Boundaries, measurements and lines are for informational purposes only and do not constitute a warranty. For more information on the accuracy of the data, please contact the Minnesota Department of Transportation. Data is dynamic and is a current state of information. Application and updates. © 2015 and 2016, Minnesota Planning and Zoning Department of Minnesota County.

R52W

Legend

- Joint Planning
- Commercial (C)
- General Industrial (I-2)
- Recreation and Conservation
- Rural Residential (RR) Lot area 1 acre or more (only Dell Rapids joint planning area)
- Residential District (RS-1) 5 dwelling units/acre or less
- Residential District (R-1) 5 dwelling units/acre or less
- Joint Planning
- Light Industrial (I-1)
- Planned Development
- Rural Residential (RR)
- Rural Residential (RR) Lot area 5 acres or more (only Dell Rapids joint planning area)
- Residential District (RS-2) 7 dwelling units/acre or less
- Residential District (RA-1) 10 to 17 dwelling units/acre

R47W

Turner County

Lyon County, IA



Map Date: 11/16/15

Envision 2035

Task Force

1. Lee Burggraff
2. Mike McAreavey
3. Deb Bunde
4. Steve Dick
5. Bonnie Duffy
6. Larry Haug
7. Bruce Aljets
8. Shannon Nordstrom
9. Steve Becker
10. Ron Klingenberg
11. Jesse Randall
12. Fran Phillips
13. Kris Swanson
14. John Zomer

Advisory Board

1. Dave Loveland
2. Slater Barr
3. Todd Schuver
4. Brooke White
5. Andy Gabbert
6. Dean Nielsen
7. DJ Buthe
8. Kevin Crisp



Minnehaha County

Envision 2035 Task Force and Advisory
Board Members

- Minnehaha County's **Envision 2035** is a long-range comprehensive planning document that provides a guide for how the County will grow over the next 20 years. The plan will provide direction in making land use and development decisions throughout the rural area of the County. It will communicate our values, goals and policies for both our current residents and future generations.
- Developing a plan is a way for residents and stakeholders to talk about what is important to them not just today, but tomorrow as well.
- It allows the community an opportunity to talk about what is important to them over the long term.

Envision 2035 Introduction

- **Comprehensive planning** is a term used in the United States by land use planners to describe a process that determines community goals and aspirations in terms of community development.
- The **outcome** of comprehensive planning is the Comprehensive Plan which dictates public policy in terms of transportation, utilities, land use, recreation, and housing. Comprehensive plans typically encompass large geographical areas, a broad range of topics, and cover a long-term time horizon.

What Chapters should we include?

Project Goals

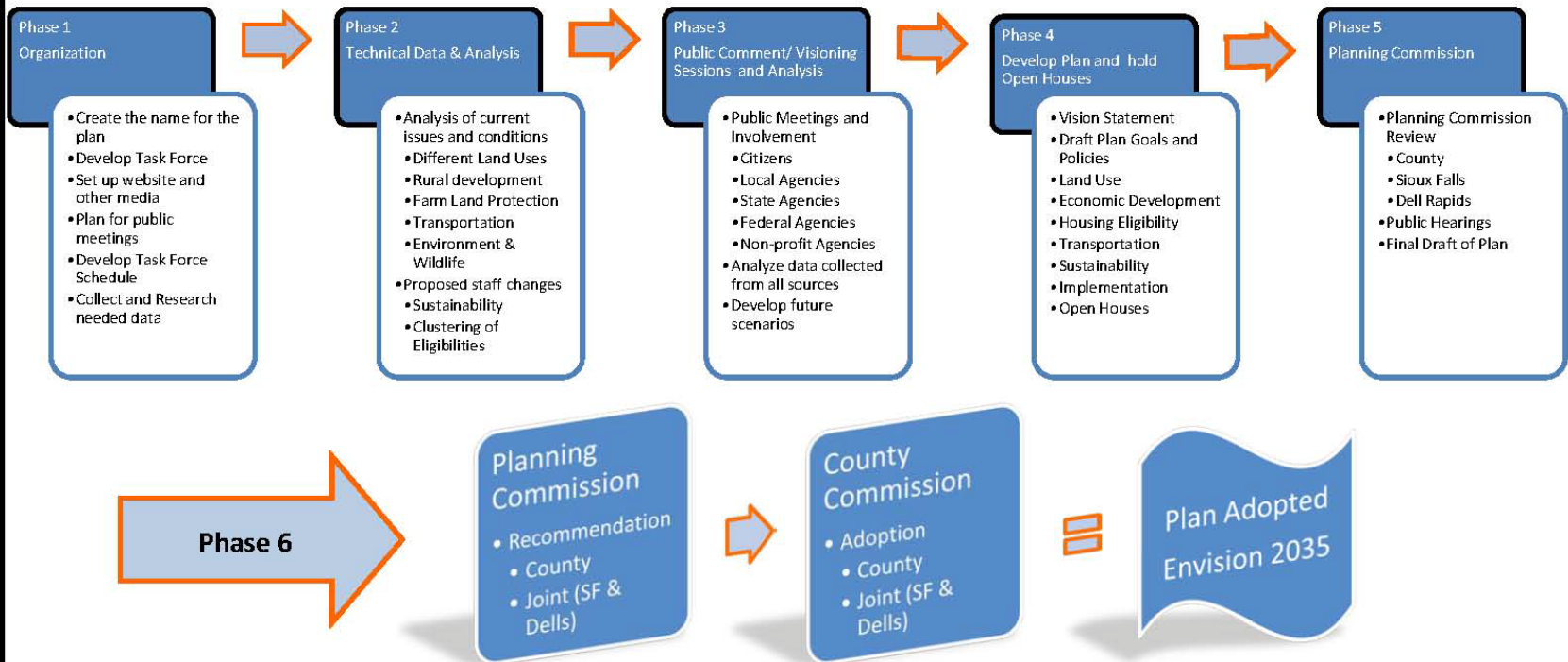
- Construct a plan that will effectively guide residents and decision-makers in future land use and development decisions.
- Form a plan that addresses agricultural, rural and urban lifestyle choices along with managing our natural and environmental resources.
- Create a plan that represents the goals and values of Minnehaha County while creating a vision for maintaining a high quality of life.

Task Force Duties

- Structure opportunities for stakeholder and public input through open houses, visioning sessions, public meetings, and other methods.
- Review the overall planning process and provide recommendations.
- Develop goals and objectives for the plan.
- Identify the issues that need to be addressed in the plan.
- Attend task force and public meetings as scheduled.

Project Goals & Task Force Duties

Minnehaha Envision 2035 County Planning Process Chart



Minnehaha County Planning Department → Moving Forward ~ Planning Ahead

Envision 2035 Introduction