

Envision 2035 Task Force

Participate. Bring Your Ideas. Imagine the Possibilities.

Minnehaha County Planning & Zoning

Ryan Streff

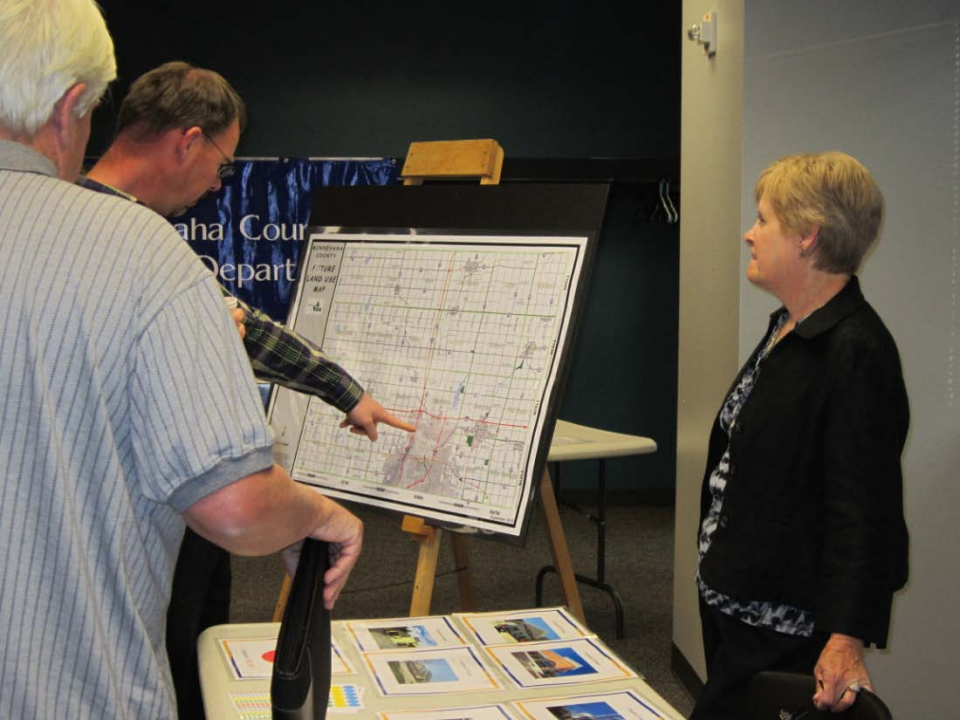
Agenda – November 1, 2012

- 1) Review of Community Open Houses
 - 1) Brandon
 - 2) Hartford
 - 3) Dell Rapids
 - 4) Tri Valley
 - 5) FYI -Attendance
 - Average 25 that signed in
- 2) Public Comments
- 3) Next Meeting Details
- 4) 2013 Calendar





Sioux Valley Electric – Brandon



Hartford High School



Dell Rapids High School



Tri-Valley High School

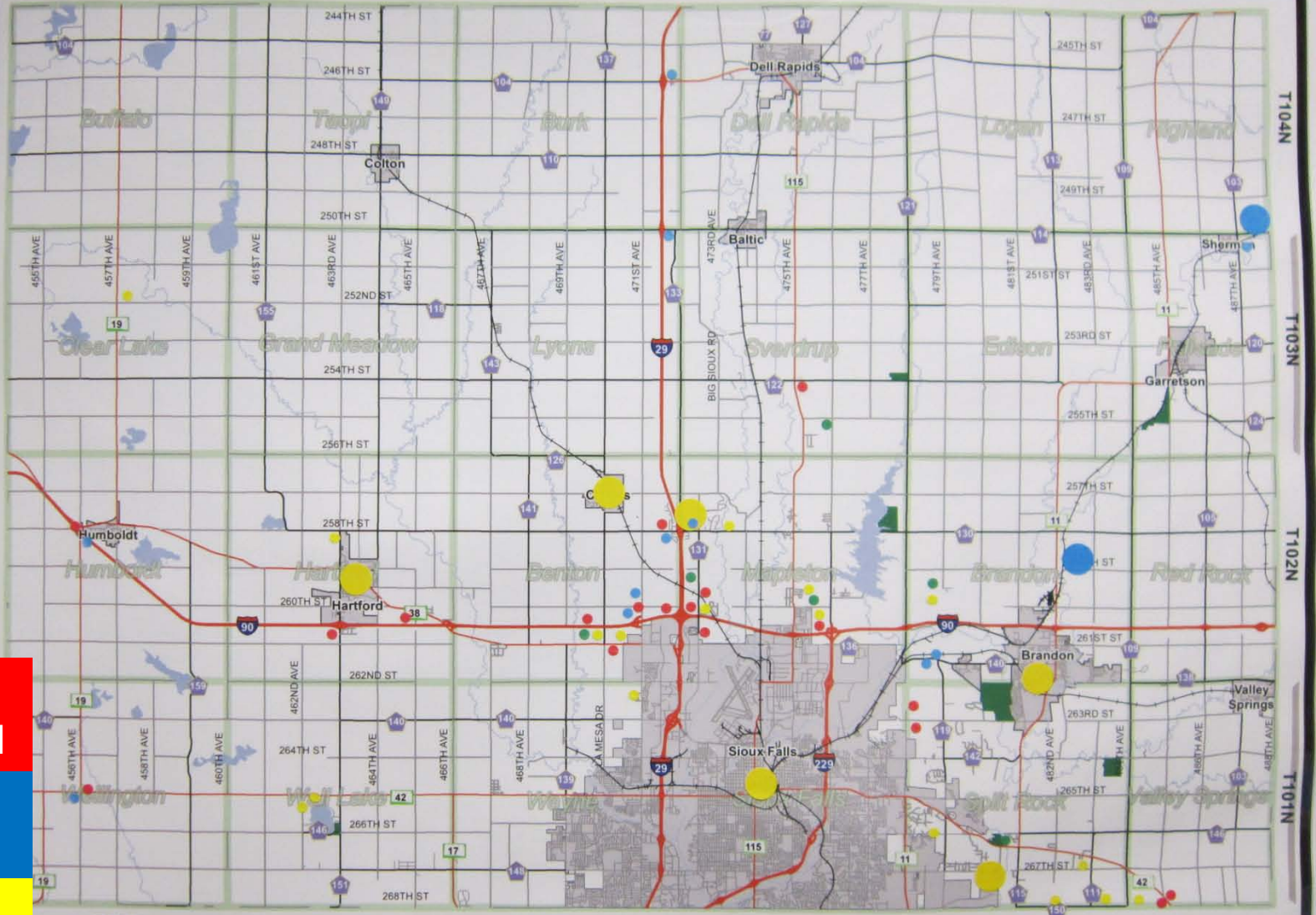


Land Use – Community Open House

MINNEHAHA COUNTY FUTURE LAND USE MAP

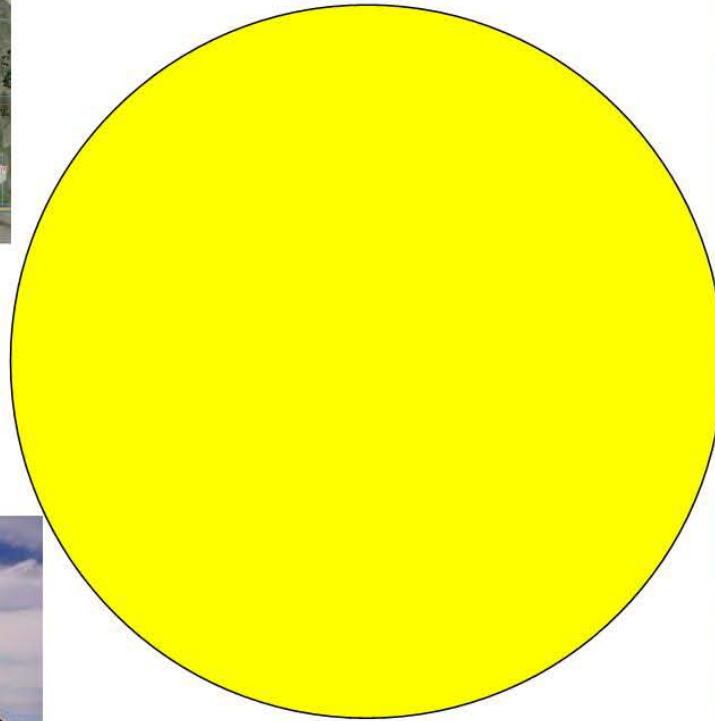


- Parks
- Lake
- River
- City Limits
- Railroad

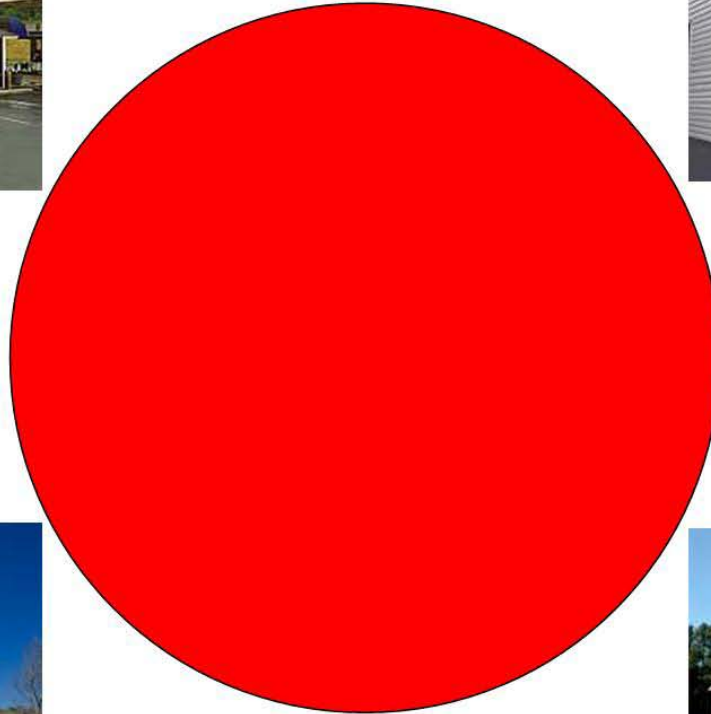


- Red – Commercial
- Blue – Industrial
- Yellow – Residential

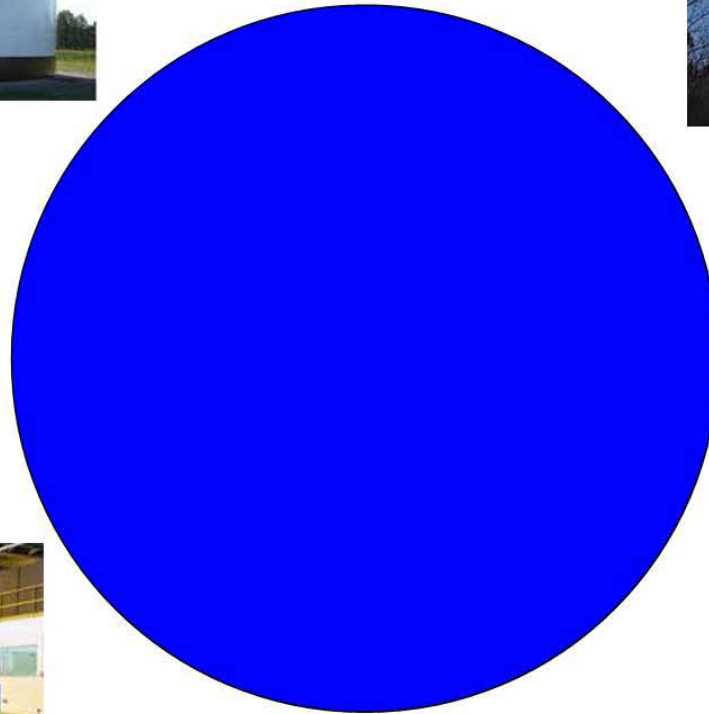
R52W R51W R50W R49W R48W R47W
T104N T103N T102N T101N
September 2012



Residen- **Yellow DOT**



Commercial = RED DOT



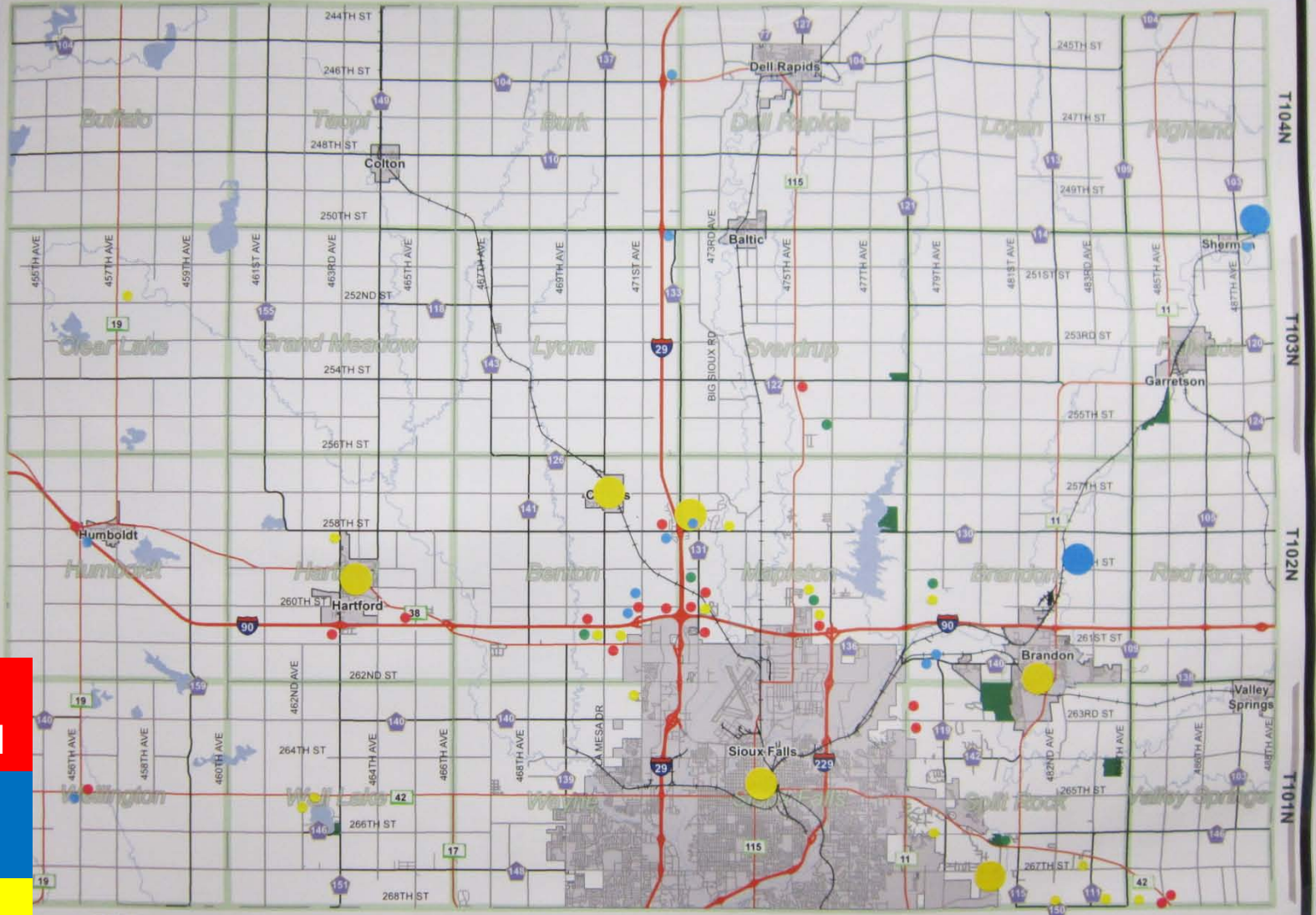
Industrial = Blue DOT

Land Use – Community Open House

MINNEHAHA COUNTY FUTURE LAND USE MAP



- Parks
- Lake
- River
- City Limits
- Railroad



Red –
Commercial
Blue –
Industrial
Yellow –
Residential

R52W R51W R50W R49W R48W R47W
T104N T103N T102N T101N
September 2012

Transportation– Community Open House

MINNEHAHA COUNTY

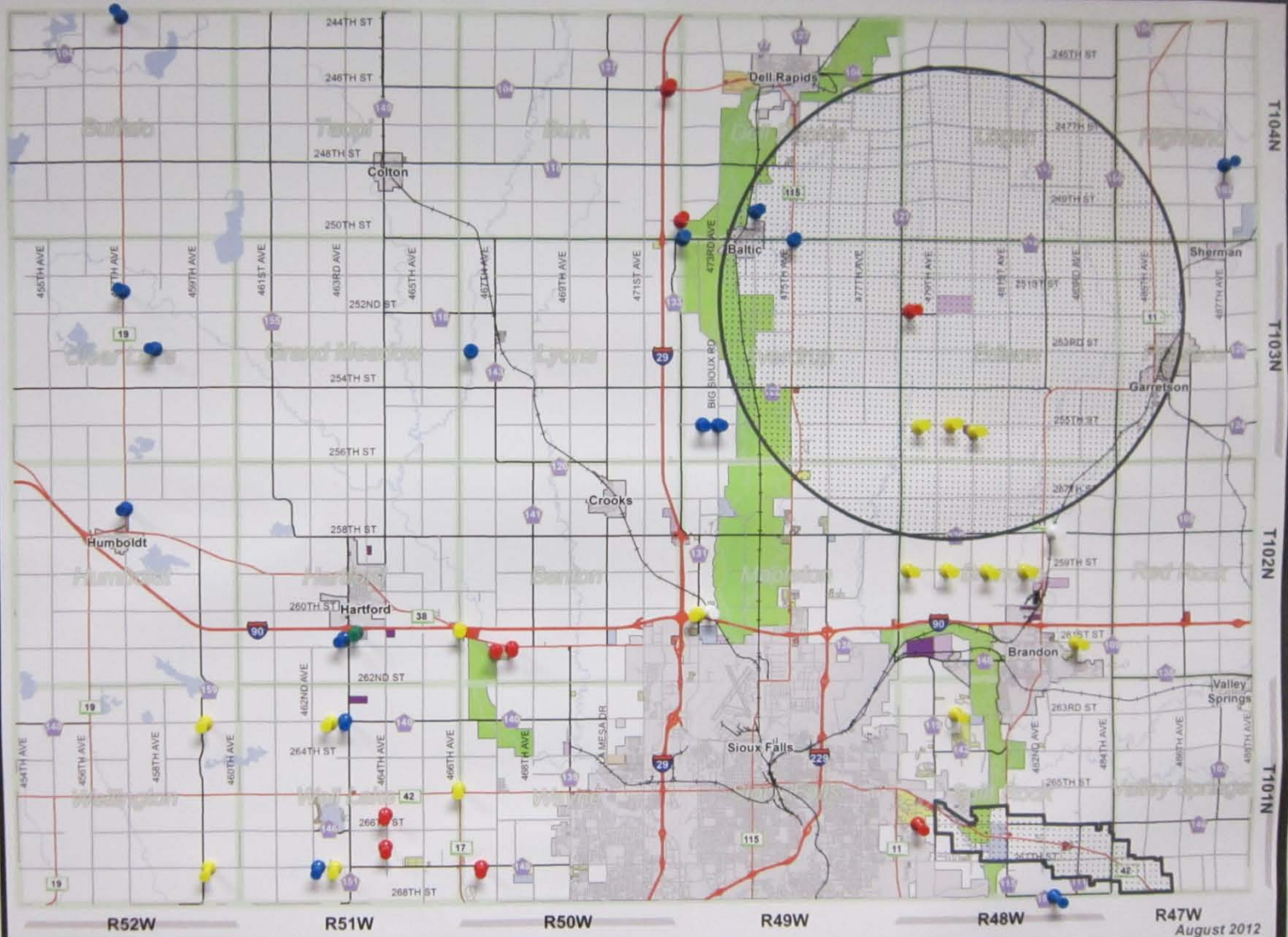
Green –
Need Stop
Signs

Red –
Speeding

Blue – Poor
RD
Conditions

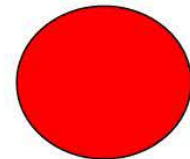
Yellow –
Hard
Surfacing

White – RR
Signals
Needed



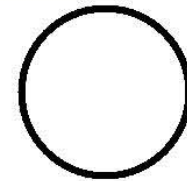


SPEEDING





RAILROAD SIGNALS



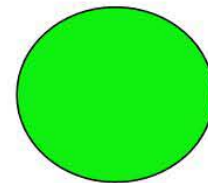


POOR ROAD CONDITIONS



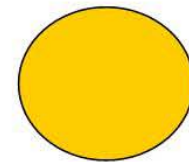


NEED STOP SIGN





HARD SURFACING



Transportation– Community Open House

MINNEHAHA COUNTY

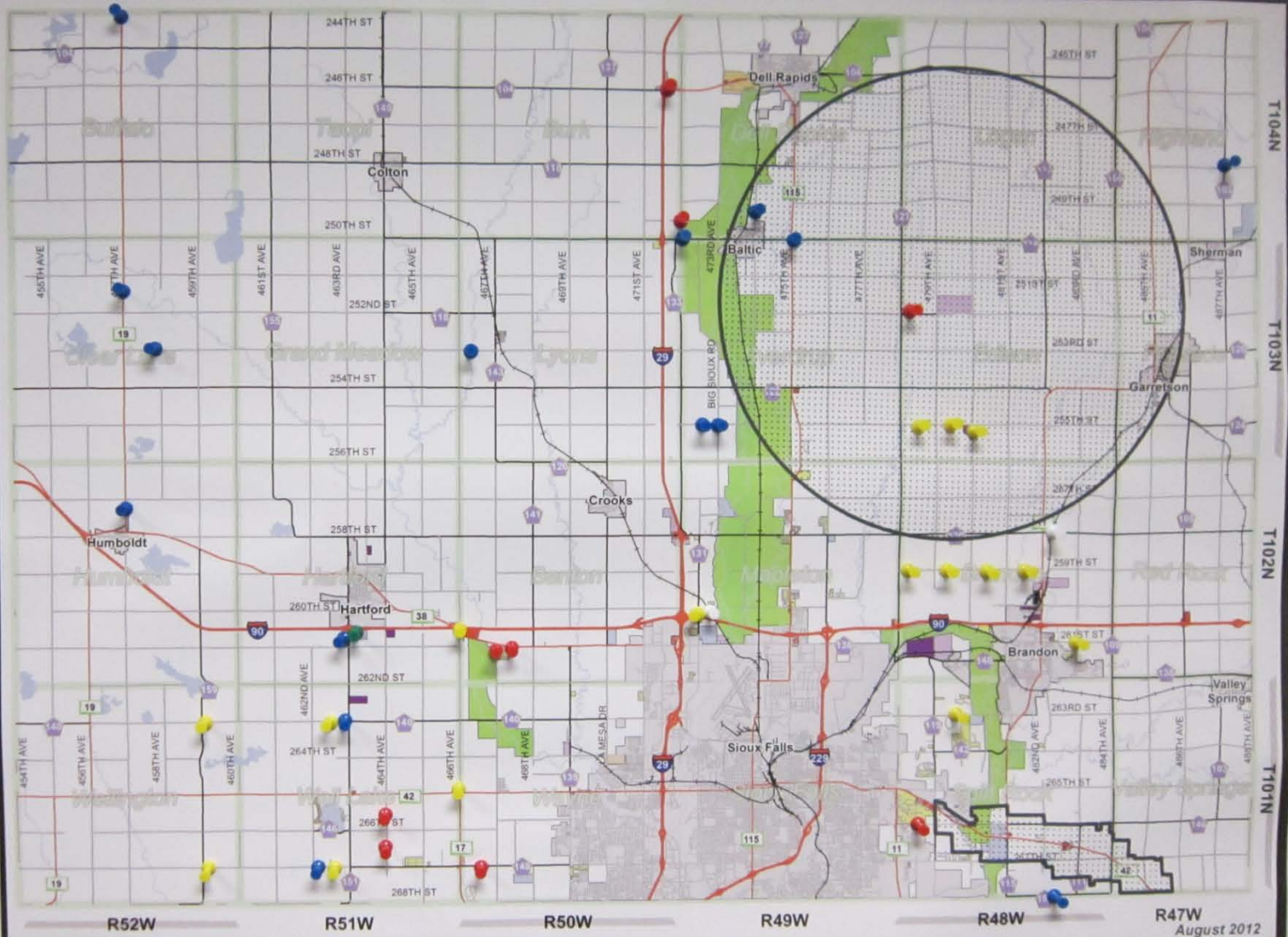
Green –
Need Stop
Signs

Red –
Speeding

Blue – Poor
RD
Conditions

Yellow –
Hard
Surfacing

White – RR
Signals
Needed



Parks/Open Space

	Playground	Bike Trails	Picnic Shelters	Walking Trails	Parks	Snowmobiling	Kajak/Canoe	Hunt/Fishing	Camping	Cross Country	Ball Fields
TRI VALLEY	1	12	3	7	2	1	3	2	3	0	0
HARTFORD	9	37	22	13	25	12	30	12	12	8	3
DELL RAPIDS	0	2	1	0	7	0	0	0	0	1	0
BRANDON	5	14	15	8	4	2	5	2	2	8	0
TOTAL	15	65	41	28	38	15	38	16	17	17	3



#1

Biking Trails



#2

Picnic Shelters JUN 2



Parks

#3 (Tie)



Kayak/Canoe

#3 (Tie)



#4

Walking Trails

AG Activity

TOTAL	Strongly Agree	Agree	Neutral	Disagree	Strongly Disagree
Preservation	26	10	1	0	0
Dwelling per acre	1/10 Acres	1/80 Acres	1/1Acre	No change	
CAFO setback	6	2	0	29	0
Corporate Farms	no limit	1/8 mile	1/4 mile	1/2 mile	1 mile
bunk-houses	6	0	4	14	15
run-off	Strongly Agree	Agree	Neutral	Disagree	Strongly Disagree
personal description	6	8	8	10	6
	Strongly Agree	Agree	Neutral	Disagree	Strongly Disagree
	5	16	8	3	6
	Strongly Agree	Agree	Neutral	Disagree	Strongly Disagree
	11	15	5	7	3
	Farmer	Hobby	Acerage	Subdivision	
	13	8	13	5	

AGRICULTURAL SURVEY

Agriculture is an important part of Minnehaha County's economic health and regulations supporting the preservation of agriculture should be required in this plan.

Strongly Agree Agree Neutral Disagree Strongly Disagree

Current regulations allow one single family dwelling per quarter-quarter (40 acres). I think this regulation should allow:

1 house per 10 acres 1 house per 80 Acres 1 house per acre No change

People who want to build a house in the county should not be allowed to build within ___ of an existing Concentrated Animal Feeding Operation (Feedlot).

As close as they want 1/8 mile 1/4 mile 1/2 mile 1 mile

Large corporate farming operations should be allowed in Minnehaha County.

Strongly Agree Agree Neutral Disagree Strongly Disagree

Some agricultural operations, such as a dairy, need employees on site 24/7. I think that these operations should be allowed to construct bunkhouses or other types of living quarters on their property.

Strongly Agree Agree Neutral Disagree Strongly Disagree

Run-off from farm fields and other agricultural uses cause environmental problems.

Strongly Agree Agree Neutral Disagree Strongly Disagree

The following best describes me:

Farmer Hobby Farmer Rural Acreage Resident Subdivision Resident

BRANDON

- 1 Please supply information door to door or in Shopping News about wind energy for homeowners - such as permits
- 2 Allow poultry in subdivisions
- 3 Allow more pets per home in subdivisions than are allowed in Sioux Falls
- 4 Pave roads in subdivisions
- 5 Drain tile is a HUGE issue affecting downstream properties. This needs to be addressed. The amount of tile installed over the last few years has dramatically increased. Flooding downstream is a result along with a dramatic affect on wildlife habitat.
- 6 There has been a visible decrease in wildlife because of tiling "farmable/seasonal wetlands" and removal of large shelter belts. With the dry year, areas that have very seldom been farmed have now been tile affecting downstream drainage and wildlife.
- 7 Need more environmental protection
- 8 Water quality needs to be checked
- 9 Saddle back
- 10 Trail Access
- 11 Sweep old Brandon RD #140
- 12 Build some roads through the hills southeast of Rice St. between Cleavand Ave. and Six Mile Road. This area is a barrier to economic activity due to no traffic corridors. Also prevents ease of access for emergency response vehicles
- 13 Reconstruct SD HWY 42 east of Sioux Falls
- 14 RR crossing on 70th Street in Swanson Tracts is in need of repair
- 15 70th Street needs to be paved
- 16 Move traffic away from 26th St (between Hwy 42 & Hwy 11) residential area with too much heavy traffic now.
- 17 Would like hard surfacing at West Chestnut Blvd to Redwood Blvd and Redwood Blvd to North Chestnut Blvd
- 18 Pave Maple St. from 6- Mile Rd east to Brandon (Sioux River Bridge)

HARTFORD

- 1 We got a post card invitation. Some got a post card invitation and a 3 page letter of invitation.
- 2 Will Ellis Road area be another major route around west Sioux Falls off I-90 exit?
- 3 Regrade and blacktop Madison street to Ellis Road.
- 4 Support commercial/industrial development along railroads. Do not place residential growth along the railroads.
- 5 Environmental protection is critical. For example, water quality, landscaping buffers, farm/livestock run off should be monitored.
- 6 Very poor construction and reworking of Highway 38. Speed limits, passing lane markings. Extremely poor resurfacing job.
- 7 Bridge conditions on 253rd Street, 1/2 mile east of Highway 19
- 8 Sign to notify Highway 122 at the intersection of Hwy 133 & Hwy 122
- 9 Road condition 268th Street from Big Sioux River to the Casino was damaged by the Lewis & Clark project and is in bad shape in spots
- 10 Road condition Highway 100 west and east side of Sioux falls
- 11 Need lighted intersection at Hwy 42 and Hwy 19- very dark and dangerous at night
- 12 Humboldt needs a grocery store
- 13 As highways are upgraded, add bike lanes. Consider bike paths in northwest part of the county
- 14 Have a canoe launch on the east side of the Big Sioux River across from the F.O.P. and west of Iverson's crossing on Hwy 42. Have public access on both sides of the river.
- 15 The more development for businesses or places of people to live - leaves less land to grow food for people and livestock. This should be considered.

DELL RAPIDS

- 1 Thanks for your time. Great discussion.
- 2 Cities/Municipalities need adequate treatment systems
- 3 Industrial use at I-29 Dells exist is needed. Land is already zoned for light industrial.
- 4 More commercial uses in Dell Rapids - grocery and businesses
- 5 Commercial use on the north side of Sioux Falls - grocery and drug store
- 6 Highway 154 - speeding over I-29 bridge at Dells exit. Poor visibility over bridge
- 7 255th Street from 478th Ave to 480th Ave needs to be hard surfaced to Nordstrom's
- 8 272nd Avenue - speeding but there is minimal enforcement. Posting signs could help. Bridge closure has made it worse.
- 9 Bridges on EROS road - all county roads in general
- 10 Dust control needed by Nordstrom's due to all the truck traffic. Pave the access. Township should not bare the costs of this part of the road

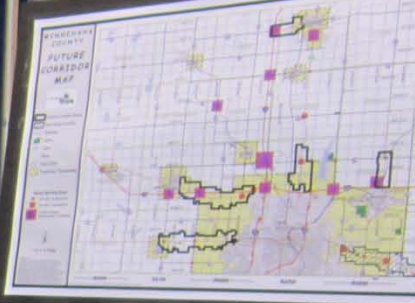
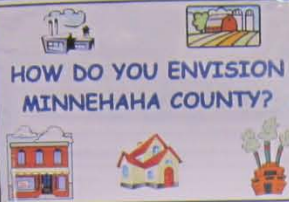
TRI-VALLEY

- 1 Jake breaking from trucks at feedlot located at 459th/249th Avenue
- 2 Scott Again. Terminal dust control on road? Have not seen water down attempts yet with traffic. Looks like gravel base to me and not aggregate as was said.
- 3 Thanks for taking time to ask for ideas and opinions.
- 4 Stop sign at 257th & 465th leaning to the left.
- 5 RR Crossing on HWY 130, 1/10 mile east of Hwy 11, is very rough
- 6 running 57th street east to the casino would be very helpful
- 7 keep county as it is, no more people
- 8 hold a meeting for all rural county bike riders to focus on developing trails
- 9 there is enough land owned by the government; support private industry and ag
- 10 No building structures in a wetland unless a land mitigation is purchased (example 2 to 1 ratio). Wetland determination should be needed before building any type of structure. Just as it is needed for drainage.

Sioux Empire Fair



HOW DO YOU ENVISION
MINNEHABA COUNTY?



MINNEHABA COUNTY
PLANNING DEPARTMENT
RAFFLE

Minnehaha County
Planning Department

Fair Booth

Approximately 150 Surveys

Many questions about development, Setbacks, Ag Preservation, Green Space/Parks/Trails, roads

General Questions about Comp Plan and the Process

Questions about Sioux Falls that their Comp Plan

Envision 2035 Raffle Questions

Please **Circle** Your Answer!

1) Where do you live?

24	8	97	17
Rural Minnehaha	Small Town, MC	Sioux Falls	Other

2) What do you believe there should be more of in the County?

48	49	21	40
Residential	Commercial	Industrial	Agriculture

3) Are bike and walking trails needed within the rural portion of Minnehaha County?

87	24	22	13
Yes	No	Maybe	I Don't Know

4) Would you use bike or walking trails?

108	16	20	5
Yes	No	Maybe	I Don't Know

5) Should there be more restrictions on where cattle/hogs can be located in the county?

30	69	22	23
Yes	No	Maybe	I Don't Know

6) Have you visited the County Parks?

102	11
Wall Lake	Bucher Prairie

7) What is your opinion of the County Parks?

56	48	8	1
Great	Fair	Needs Work	Not Good

8) Are you satisfied with the way rural Minnehaha County is being developed, such as where commercial is located, limiting housing, etc.

75	16	30	22
Yes	No	Maybe	I Don't Know

9) Does the County require Building Permits?

98	5	5	34
Yes	No	Maybe	I Don't Know

Comments: _____

Would you like to receive emails regarding the development of the Envision 2035 Plan? Y/N

- Email Address _____
- Phone _____

Other Questions or Comments?

envision2035.minnehahacounty.org

Next Meeting?

To Be Announced

**2013 Calendar?
Thursday @ 3pm?**

MINNEHAHA COUNTY FUTURE LAND USE MAP



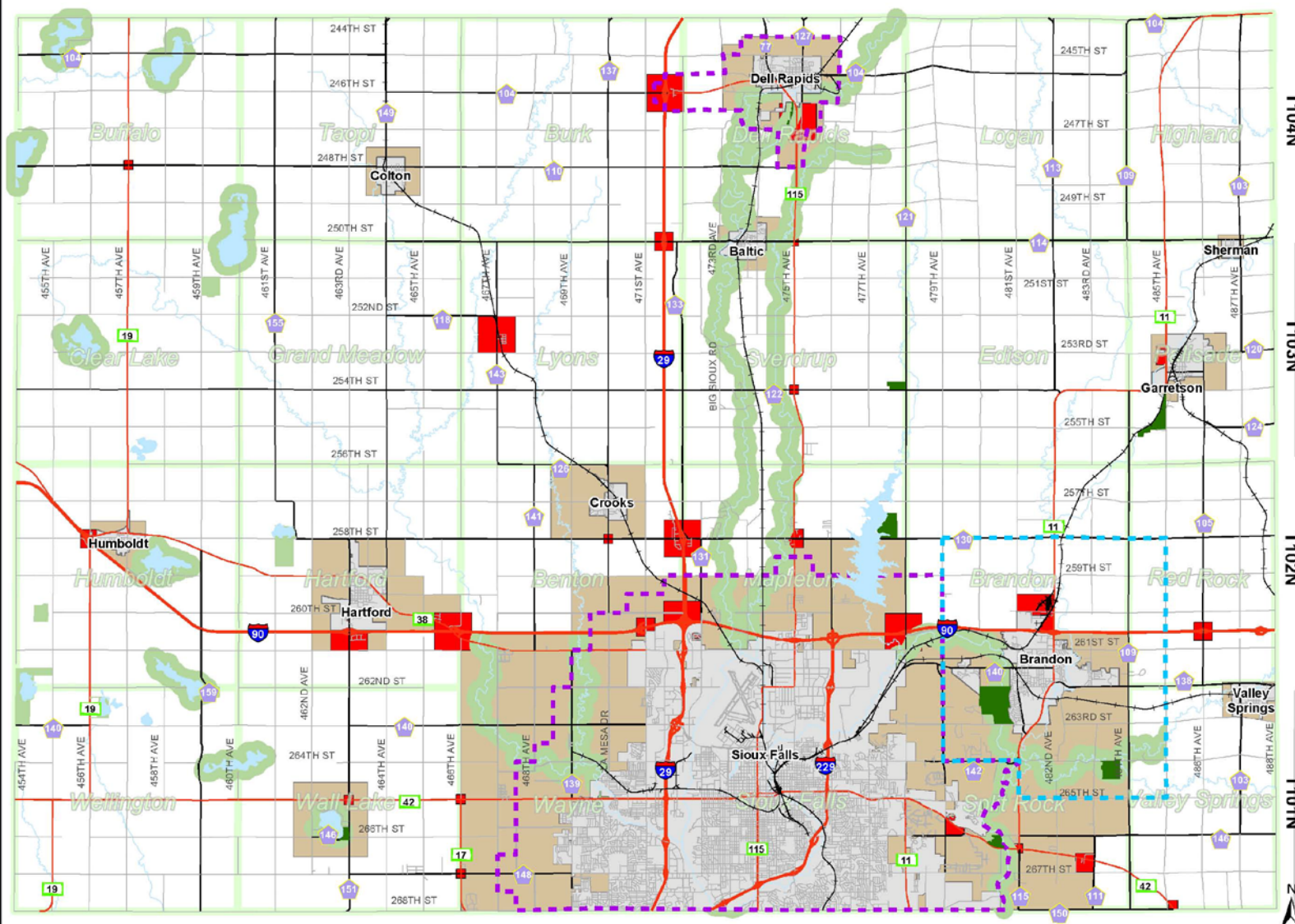
- Railroad
- Parks
- Joint Planning
- Joint Platting
- Lake
- River
- City
- Open Spaces / Greenways
- Transition Areas

Rural Service Area

- 1/4 mile
- 1/2 mile
- 1 mile

1 inch = 2.5 miles

Disclaimer:
The Data is provided "as is" without warranty or any representation of accuracy, timeliness or completeness. The burden for determining accuracy, completeness, timeliness, merchantability and fitness for or the appropriateness for use rests solely on the requester. Minnehaha County makes no warranties, express or implied, as to the use of the Data. There are no implied warranties of merchantability or fitness for a particular purpose. The requester acknowledges and accepts the limitations of the Data, including the fact that the Data is dynamic and is in a constant state of maintenance, correction and update.

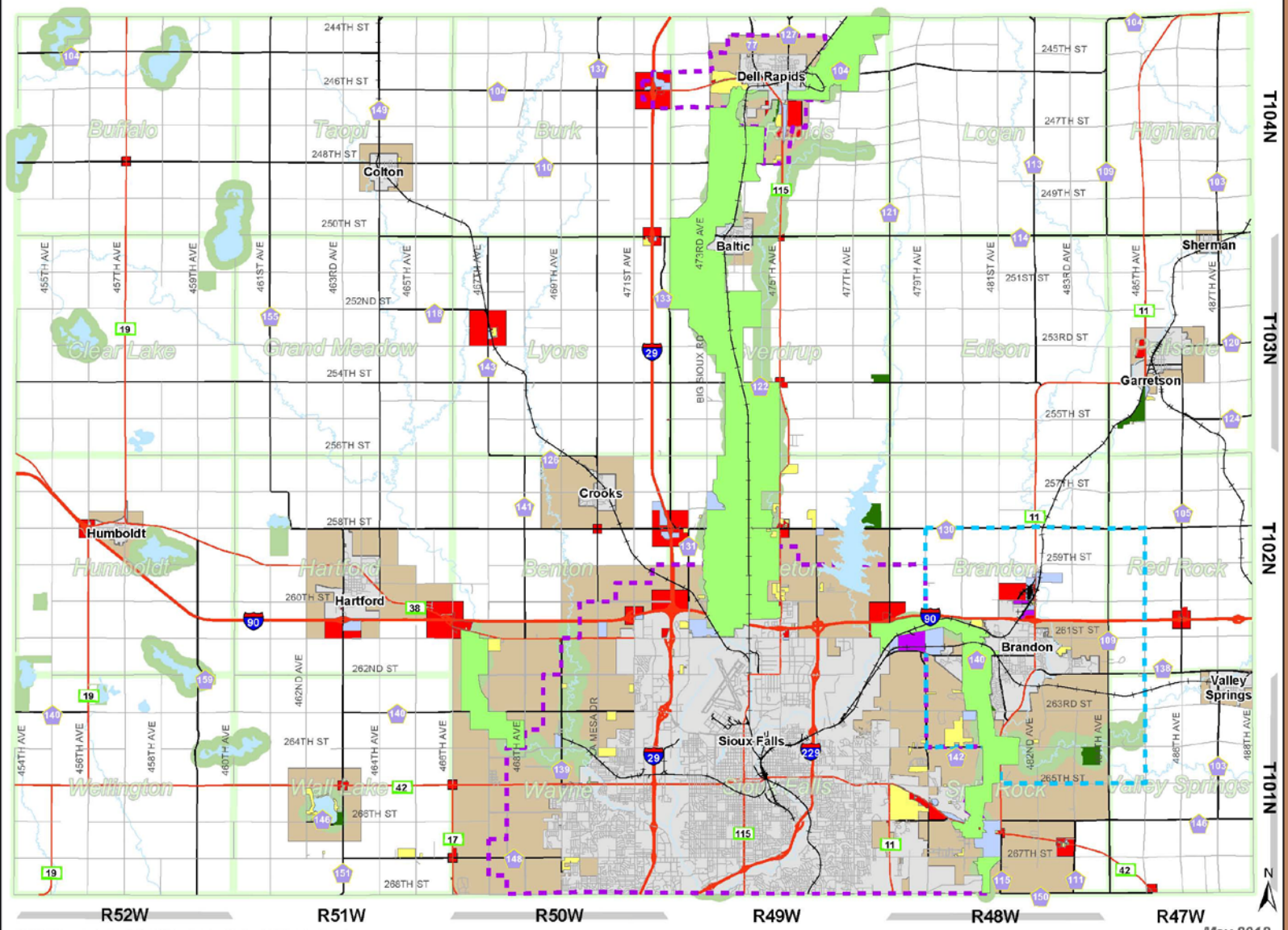


MINNEHAHA COUNTY FUTURE LAND USE MAP



- Railroad
 - C
 - I-1
 - I-2
 - PD
 - RC
 - RR
 - Parks
 - Joint Planning
 - Joint Platting
 - Lake
 - River
 - City
 - Open Spaces / Greenways
 - Transition_Areas
- Rural Service Area**
- 1/4 mile
 - 1/2 mile
 - 1 mile
- 1 inch = 2.5 miles

Disclaimer:
The Data is provided "as is" without warranty or any representation of accuracy, timeliness or completeness. The burden for determining accuracy, completeness, timeliness, merchantability and fitness for or the appropriateness for use rests solely on the requester. Minnehaha County makes no warranties, expressed or implied, as to the use of the Data. There are no implied warranties of merchantability or fitness for a particular purpose. The requester acknowledges and accepts the limitations of the Data, including the fact that the Data is dynamic and is in a constant state of maintenance, correction and update.



MINNEHAHA COUNTY FUTURE BIKE TRAIL MAP

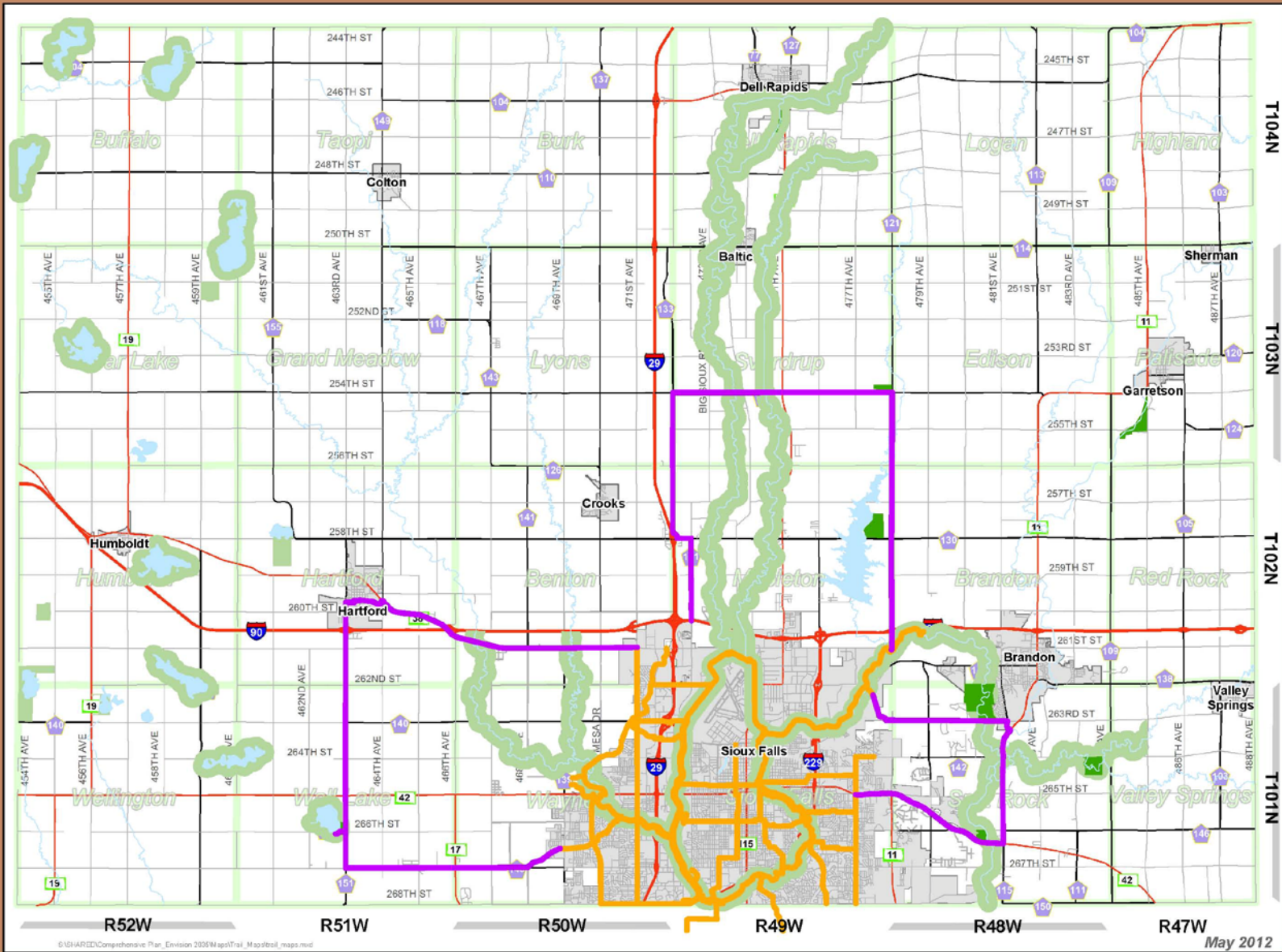


-  Sioux Falls Bike Trails
-  Future Bike Trails
-  Parks



1 inch = 2.5 miles

Disclaimer:
The Data is provided "as is" without warranty or any representation of accuracy, timeliness or completeness. The burden for determining accuracy, completeness, usefulness, merchantability and fitness for or the appropriateness for use rests solely on the requester. Minnehaha County makes no warranties express or implied, as to the use of the Data. There are no implied warranties of merchantability or fitness for a particular purpose. The requester acknowledges and accepts the limitations of the Data, including the fact that the Data is dynamic and is in a constant state of maintenance, correction and update.



MINNEHAHA COUNTY FUTURE CORRIDOR MAP



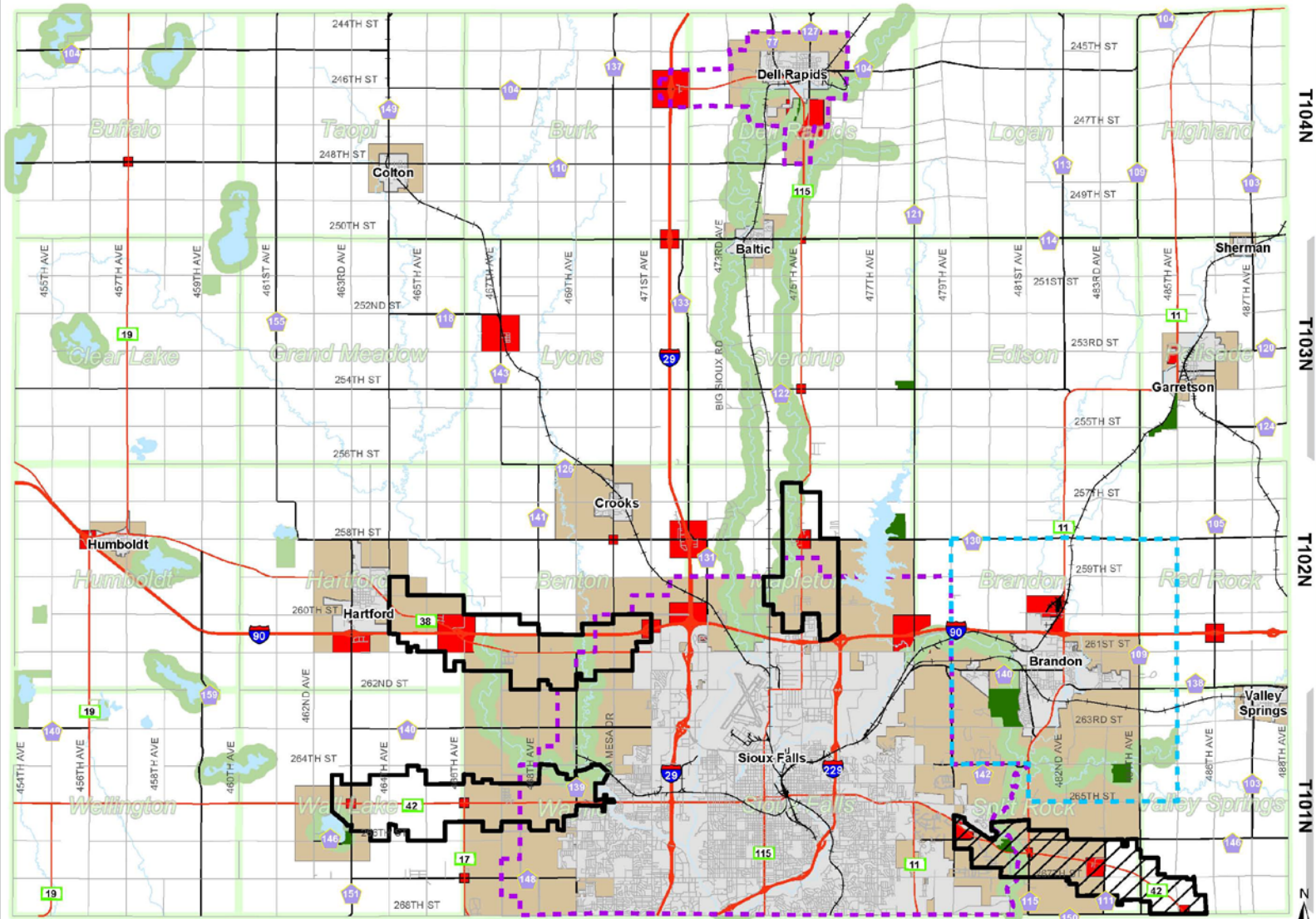
- Railroad
- Red Rock Corridor
- Hwy 115 Corridor
- Hwy 42 Corridor
- Hwy 38 Corridor
- Parks
- Joint Planning
- Joint Platting
- Lake
- River
- City
- Open Spaces / Greenways
- Transition Areas

Rural Service Area

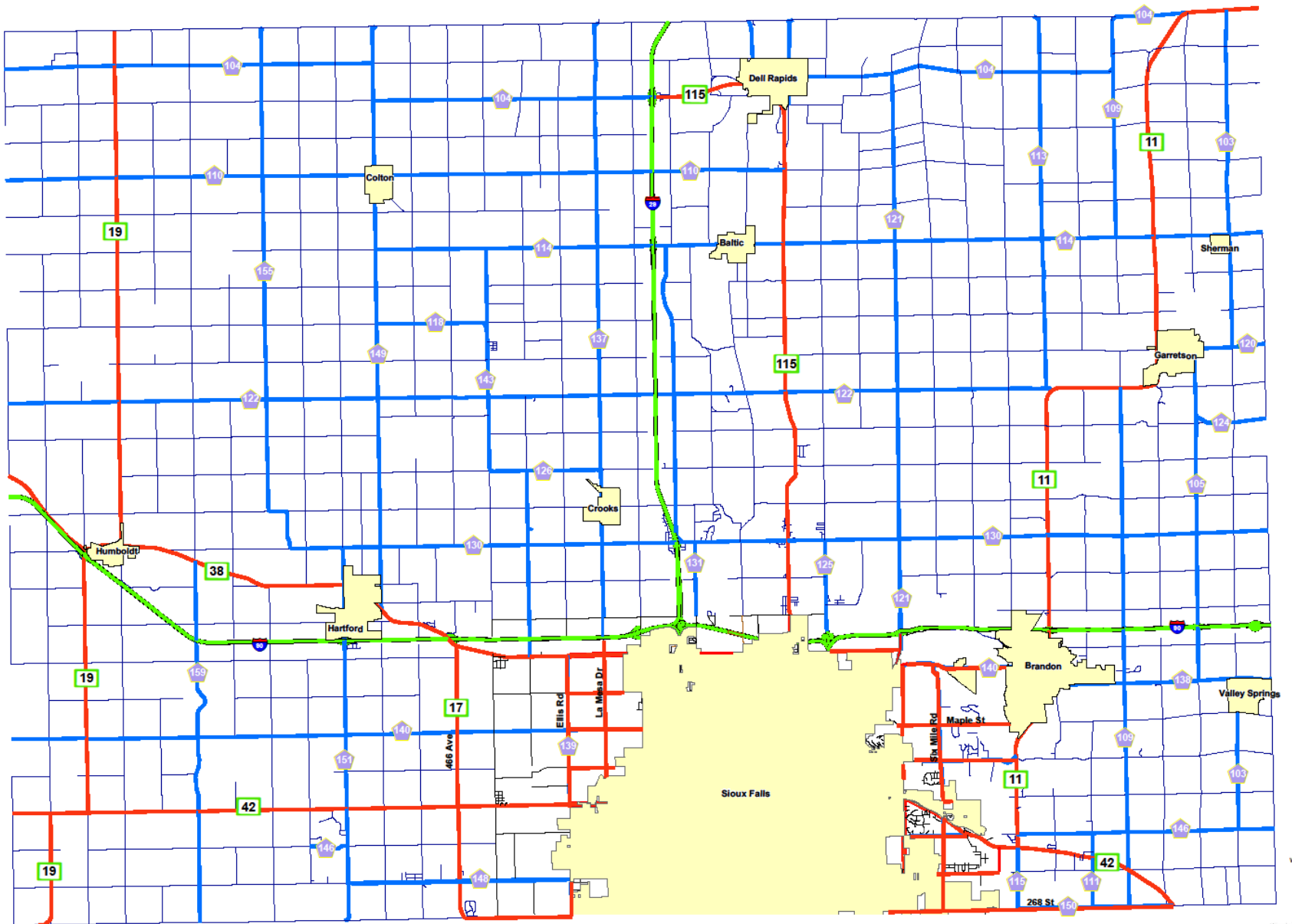
- 1/4 mile
- 1/2 mile
- 1 mile

1 inch = 2.5 miles

Disclaimer:
The data is provided "as is" without warranty by or any representation of accuracy, timeliness or completeness. The burden for determining accuracy, completeness, timeliness, merchantability and fitness for any other appropriateness for use rests solely on the user. Minnehaha County makes no warranties express or implied, as to the use of the data. There are no implied warranties of merchantability or fitness for a particular purpose. The user acknowledges and accepts the limitations of the data, including the fact that the data is dynamic and is in a constant state of maintenance, correction and update.



MINNEHAHA COUNTY MAJOR STREET PLAN



Envision 2035

Task Force

1. Lee Burggraff
2. Mike McAreavey
3. Deb Bunde
4. Steve Dick
5. Bonnie Duffy
6. Larry Haug
7. Bruce Aljets
8. Shannon Nordstrom
9. Steve Becker
10. Ron Klingenberg
11. Jesse Randall
12. Fran Phillips
13. Kris Swanson
14. John Zomer

Advisory Board

1. Dave Loveland
2. Slater Barr
3. Todd Schuver
4. Brooke White
5. Andy Gabbert
6. Dean Nielsen
7. DJ Buthe
8. Kevin Crisp



Minnehaha County

Envision 2035 Task Force and Advisory
Board Members